

ROAD CONTROL SURVEY

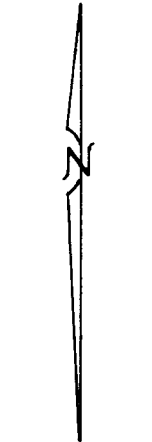
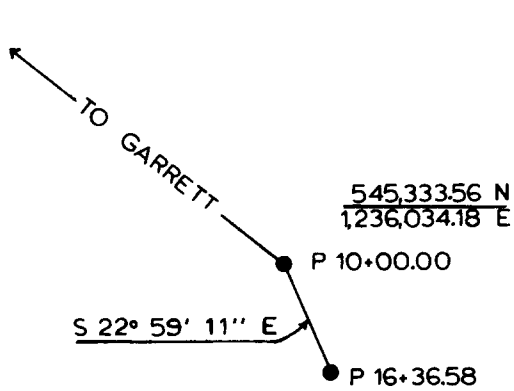
Glengary Loop Road No. 121

T. 28 S., R. 5&6 W., W.M.

COUNTY SURVEYORS FILE DATA
 DO NOT REMOVE FROM OFFICE

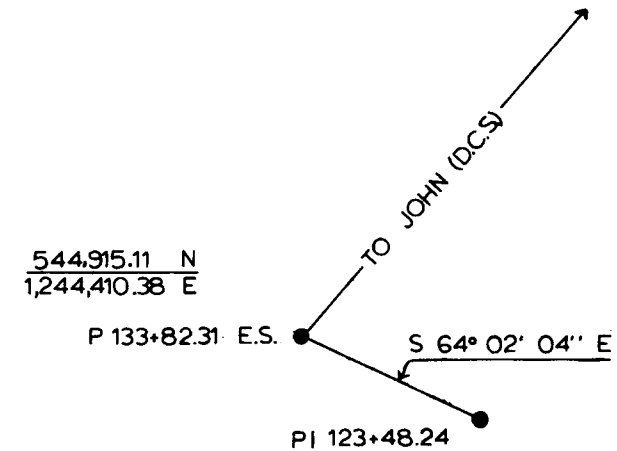
[Signature]
 4 1973
 SURVEYED BY
 FRANCIS L. INGRAM

Surveyed for Douglas County
 Surveyed by Douglas County Surveyors Office
 Francis L. Ingram County Surveyor
 Scale: 1" = 1000'
 March, 1973



Grid North

Survey based on Geodetic Control Stations Ledge, Garrett, John (D.C.S) and Radio 1953.



Note:

All data shown based upon the Oregon State Plane Coordinate System, South Zone.

LEDGE:	GARRETT:	JOHN:	RADIO:
$\frac{547018.27}{1,223,630.15}$ N E	$\frac{552,649.46}{1,228,648.48}$ N E	$\frac{559,842.39}{1,254,666.21}$ N E	$\frac{568,524.03}{1,223,722.72}$ N E

Francis L. Ingram