

# ROAD CONTROL SURVEY

## Sutherlin-Nonpareil County Road No. 19

### T. 25 S., R. 4 W., Will. Mer.

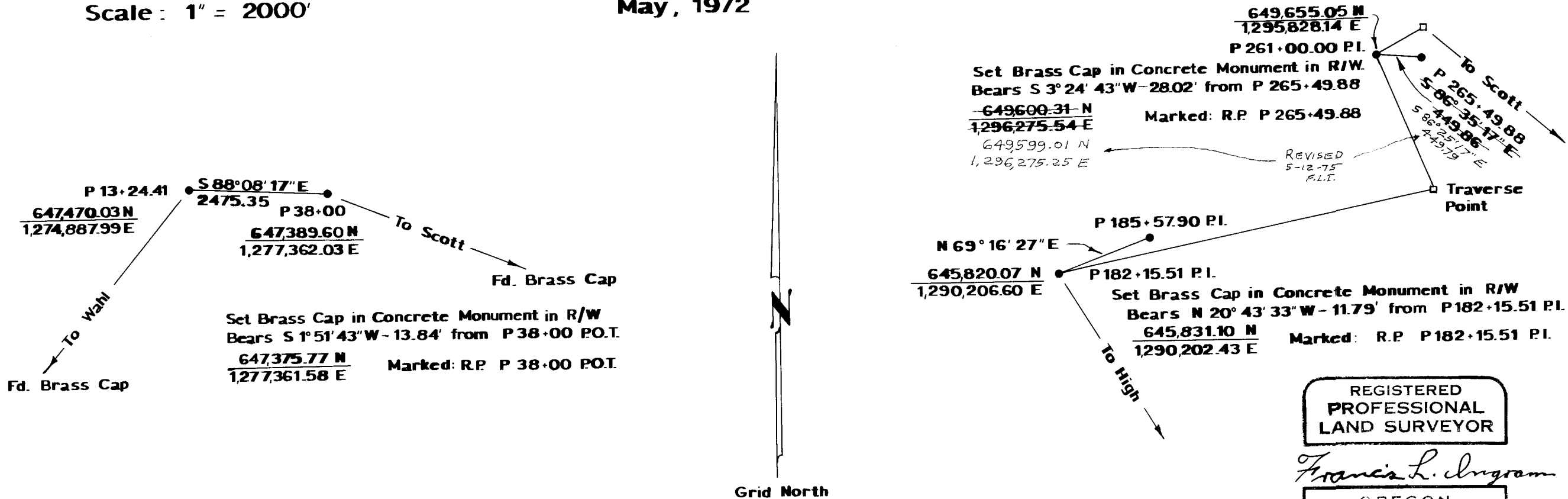
FILED *[Signature]*  
RECEIVED

JUN 5 1972

COUNTY SURVEYOR  
DOUGLAS COUNTY, OREGON

**COUNTY SURVEYORS FILE DATA**  
**DO NOT REMOVE FROM OFFICE**

Surveyed for Douglas County  
Surveyed by Douglas County Surveyor's Office  
Francis L. Ingram  
Scale: 1" = 2000'  
County Surveyor  
May, 1972



**NOTE:**  
All data shown based upon  
the Oregon State Plane Coordinate  
System, South Zone.

**WAHL:**  
630,363.64 N  
1,260,793.42 E

**SCOTT:**  
632,071.28 N  
1,318,465.56 E

**HIGH:**  
631,994.19 N  
1,298,907.70 E

REGISTERED  
PROFESSIONAL  
LAND SURVEYOR

*Francis L. Ingram*

OREGON  
JULY 11, 1969  
FRANCIS L. INGRAM  
902

CS FILE FOLDER

CONTAINS

MORE

INFORMATION