

SURVEY FOR JOHN PATRICK SEC. 19, T28S, R6W, W.M.

SURVEYED BY FRANCIS L. INGRAM
SCALE: 1" = 100' JULY, 1973

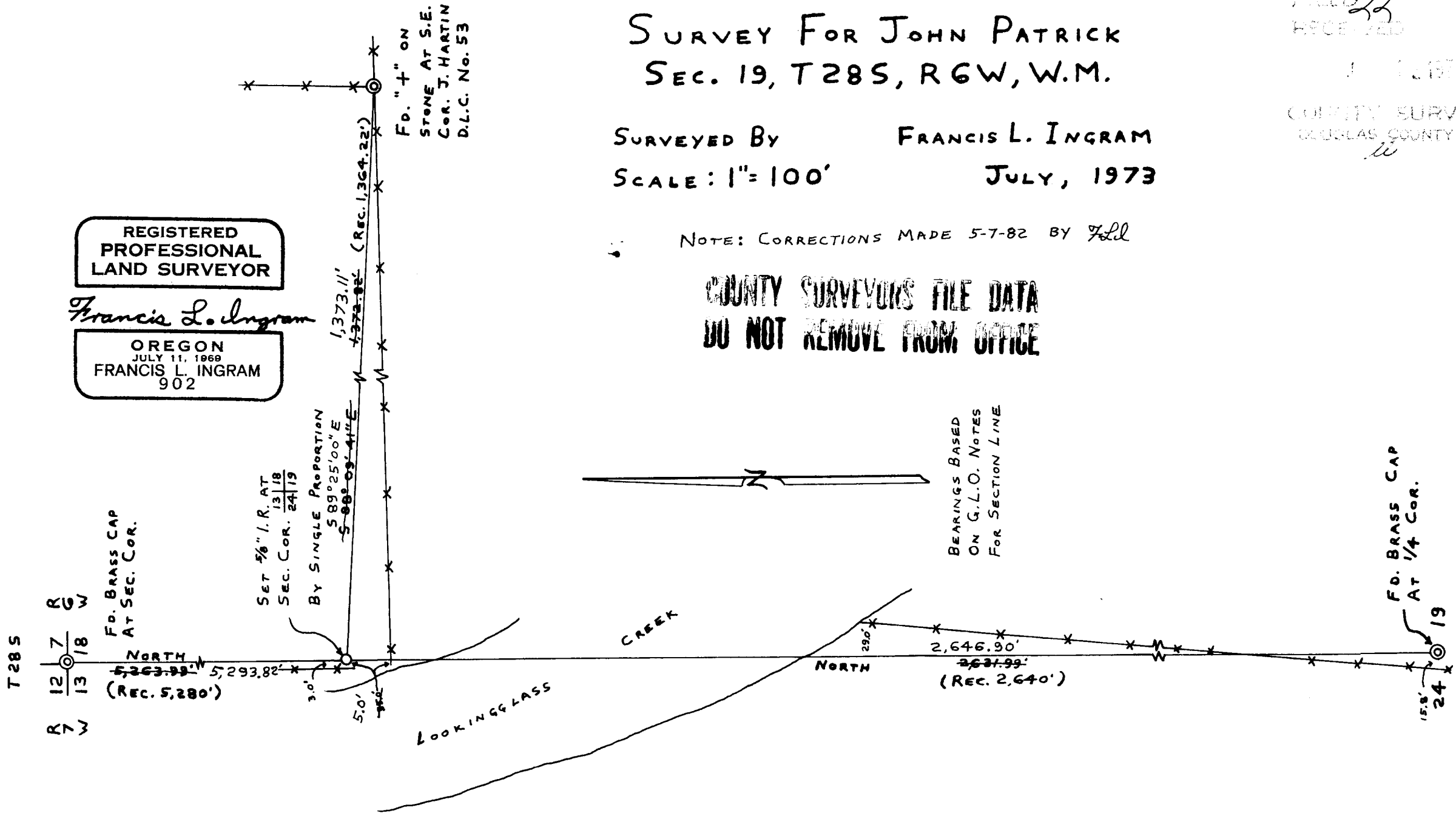
NOTE: CORRECTIONS MADE 5-7-82 BY *FLL*

**COUNTY SURVEYORS FILE DATA
DO NOT REMOVE FROM OFFICE**

FILED *LI*
RECEIVED

JUL 12 1973

COUNTY SURVEYOR
DOUGLAS COUNTY, ORE.
ll



REGISTERED
PROFESSIONAL
LAND SURVEYOR

Francis L. Ingram

OREGON
JULY 11, 1969
FRANCIS L. INGRAM
902

T28S

R 7 W
12 7 18
13 18