

SURVEY IN SEC. 22, T.28 S., R.6 W.; WILL. MER.

Surveyed for J.L. Kimberling

Surveyed by F.L. Ingram

May, 1972

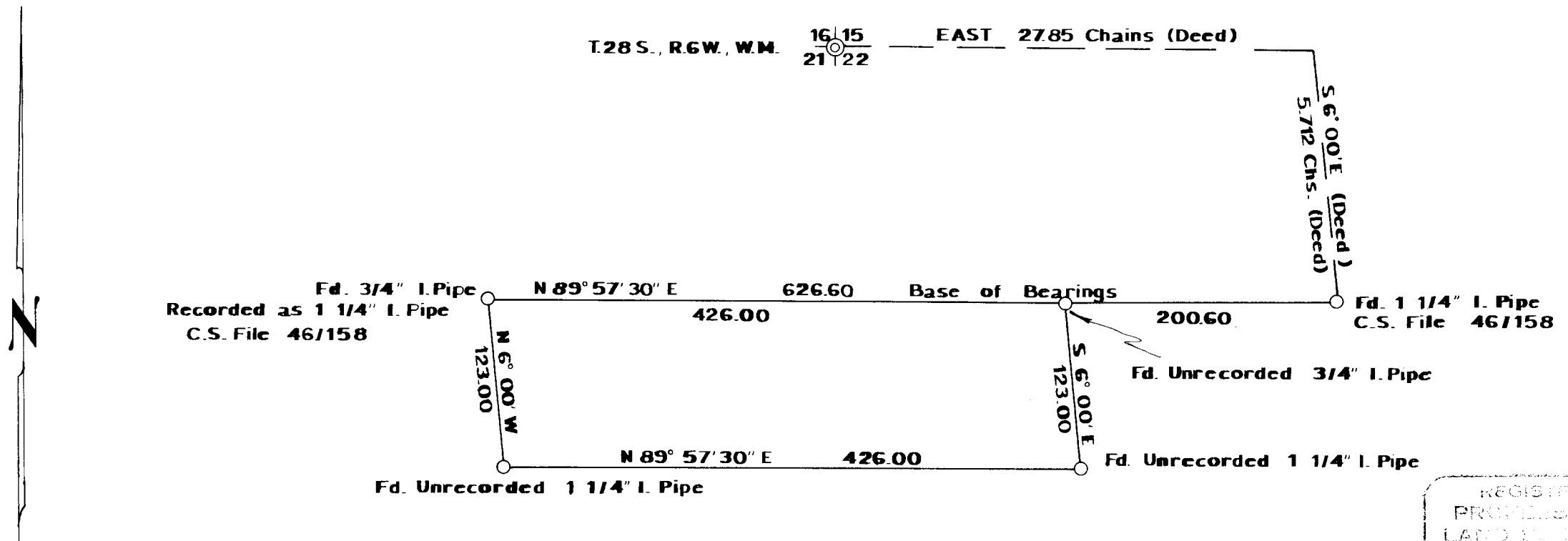
Scale 1" = 100'

COUNTY SURVEYORS FILE DATA
DO NOT REMOVE FROM OFFICE

FILED *LI*
RECEIVED

MAY 3 11 1972

COUNTY SURVEYOR
DOUGLAS COUNTY, ORE.



REGISTERED
PROFESSIONAL
LAND SURVEYOR

Francis L. Ingram

OREGON
JULY 1, 1971
FRANCIS L. INGRAM
902