

BEARINGS BASED ON
N. 70° 18' E.

REGISTERED
OREGON
LAND SURVEYOR

Francis L. Ingram

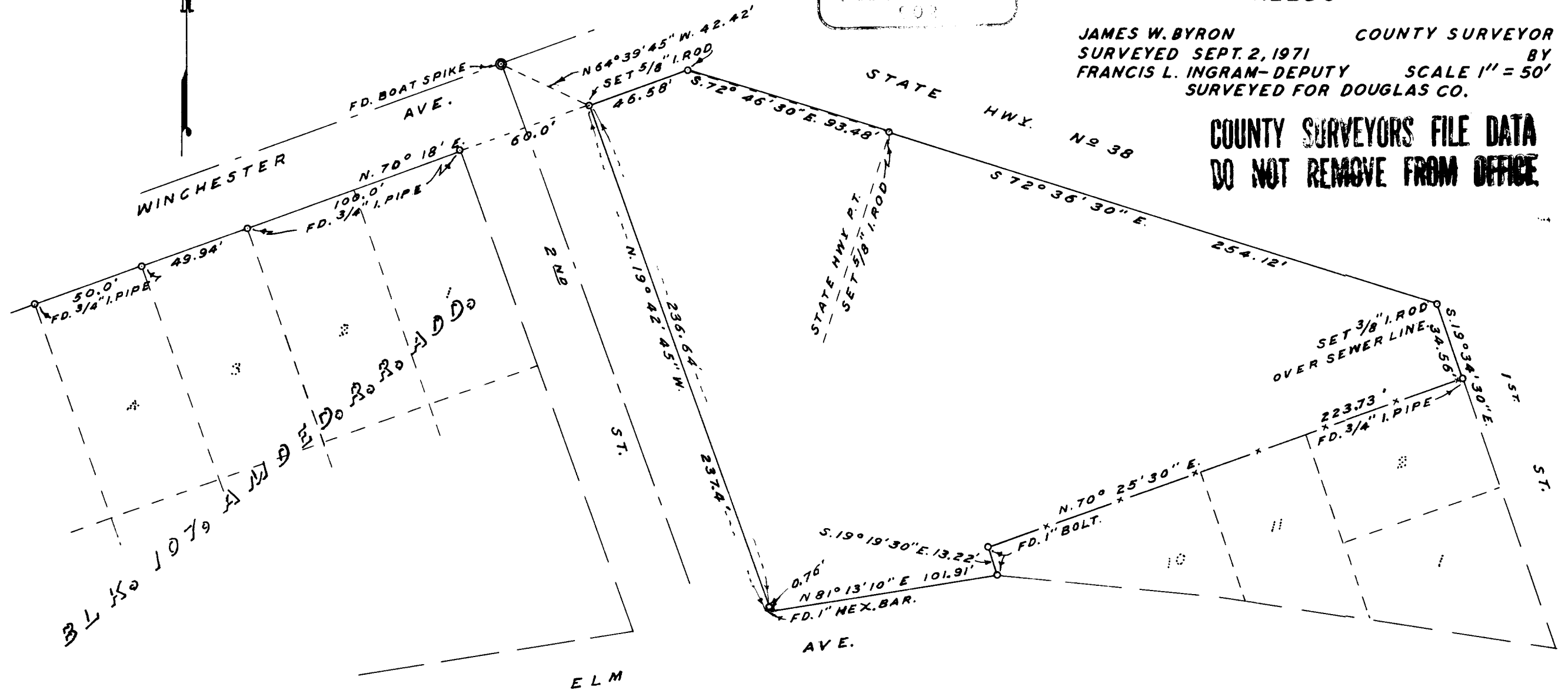
JUL 11 1971
FRANCIS L. INGRAM
103

COUNTY SURVEYOR'S OFFICE
DOUGLAS COUNTY, OREGON

SURVEY TO SET PROPERTY CORNERS,
IN BLOCK 2 & 3, UMPQUA ADDITION TO
REEDSPORT

JAMES W. BYRON COUNTY SURVEYOR
SURVEYED SEPT. 2, 1971 BY
FRANCIS L. INGRAM-DEPUTY SCALE 1" = 50'
SURVEYED FOR DOUGLAS CO.

**COUNTY SURVEYORS FILE DATA
DO NOT REMOVE FROM OFFICE**



CS FILE FOLDER

CONTAINS

MORE

INFORMATION