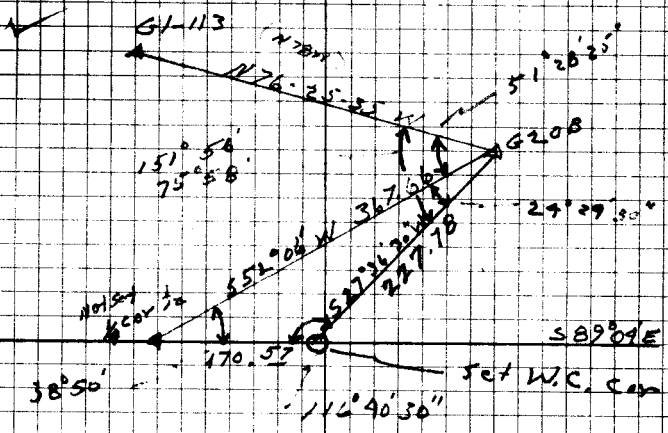


cap set

W.C. T₂

T225 R12W (4)

This cap set from survey as follows



DIETZGEN NO. 3885-6

Set Brass cap on Sec line MKD.

County Surveyors Office

T225 R12W

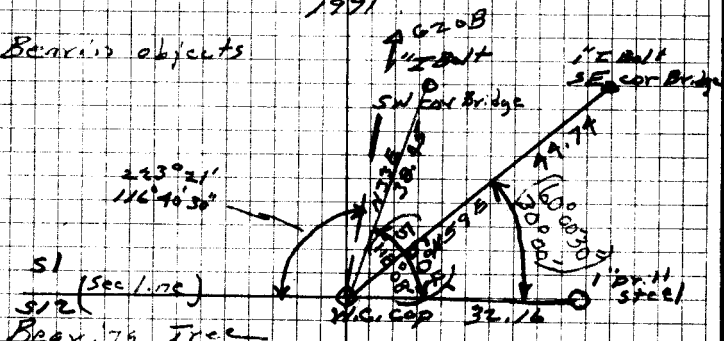
W.C. T₂

S. 1

3/2

1971

Ben's objects



S1 (Sec. line)
S1/2

Beav. 79 Tree
5" cedar

Sec. 64 W.C. T₂ S1/2 33 BT

W.C. T₂ 1/4 Cor. Sec. 1/2 C.S. File No.

170.57' E. of

#82 T22-12

5615

6-10-71

1971