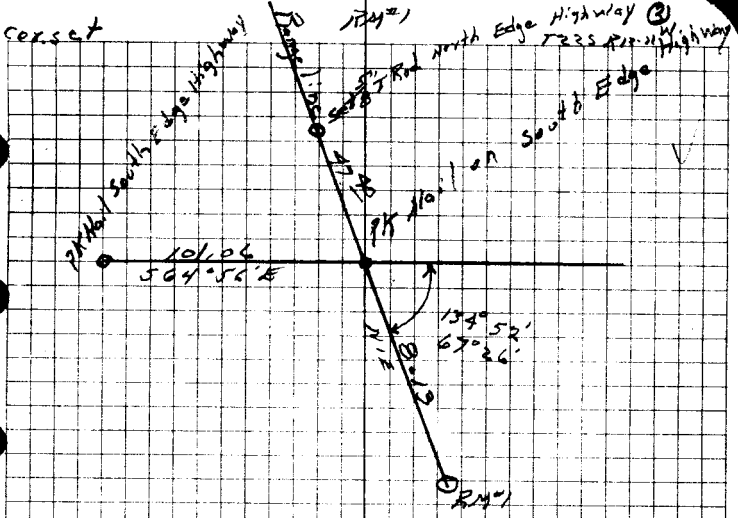


Cor. set



DIETZGEN NO. 385-6

Set Brass cap on Range line MAD

Douglas county Surveyors office

T225			
R	RM 1	R	
12	51	56	11
W			W

1971

Bearing objects:

3/4" I Rod N1E 47°  
This Rod on north Edge of Highway

3" + SB4W 11°  
This cross about 1' above ground on high Rod  
ALFA

3" + S55E 17°  
This cross about 1' above ground on high Rod  
BUBB

(Cor. 217.37 N. of VACOR Sec. 10 only)

104-722-11

179-722-12

56/5 12

6-10-71  
L225  
22-65  
173