

SURVEY TO SET PROPERTY CORNERS
 IN D.L.C. #43, T.295., R.7W.W.M. SEC. 6 & 7
 FOR FRANK STRINGER
 by BRUCE ROGERS
 AUG., 1974

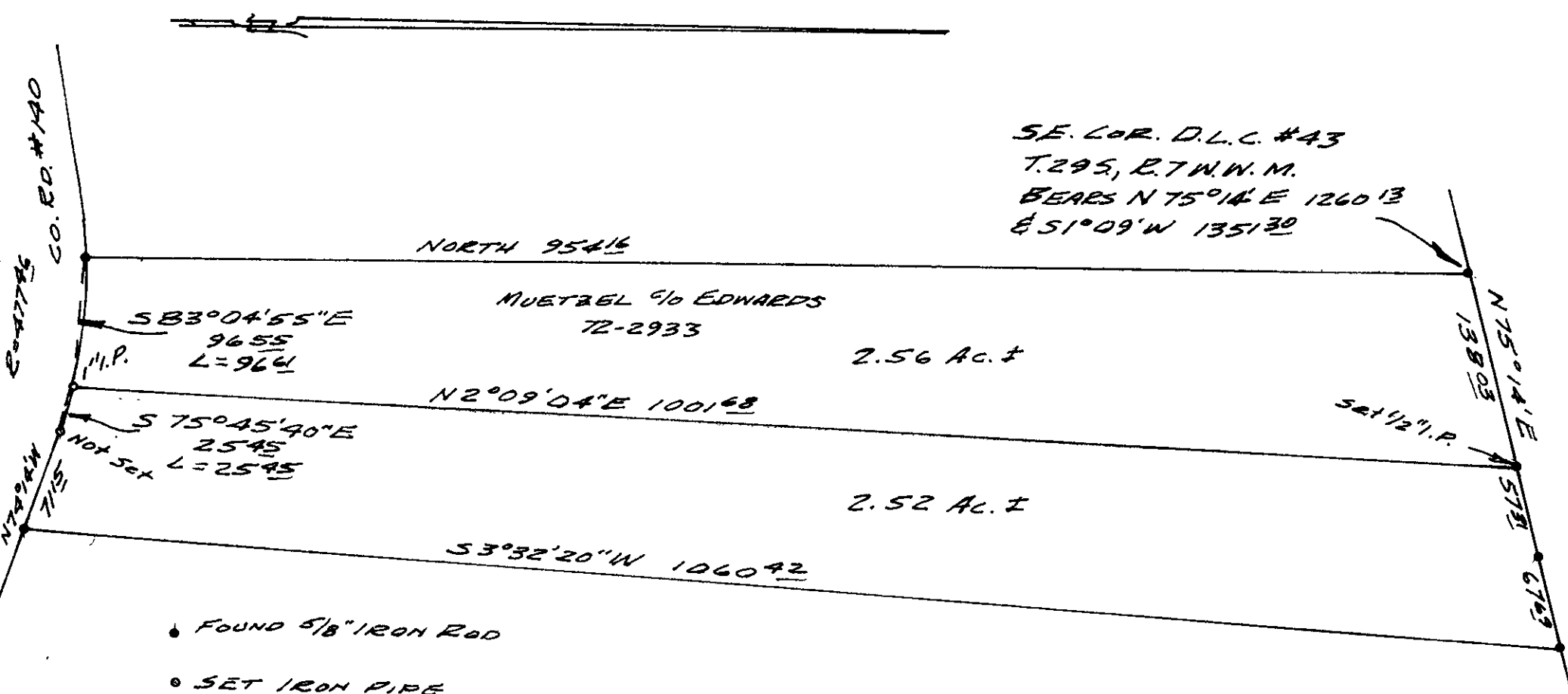
1" = 100'

COUNTY SURVEYORS FILE DATA
 DO NOT REMOVE FROM OFFICE

FILED ✓
 RECEIVED *See*

Bruce L. Rogers

COUNTY SURVEYOR
 DOUGLAS COUNTY, MO
md



SE. COR. D.L.C. #43
 T.295, R.7W.W.M.
 BEARS N 75°14' E 1260.13
 & S 1°09' W 1351.30

- FOUND 5/8" IRON ROD
- SET IRON PIPE