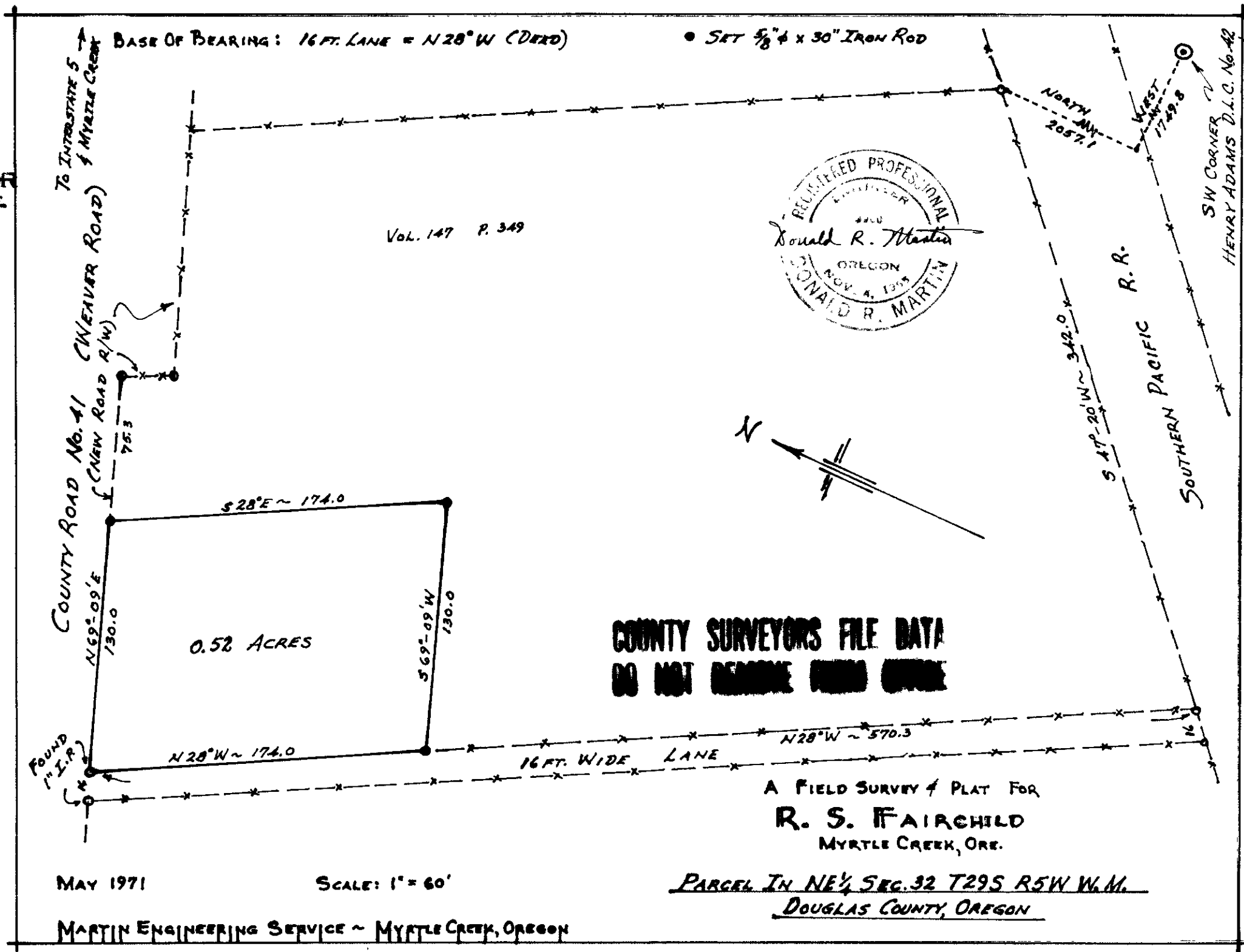


FILED  
RECEIVED

AUG 12 1974

COUNTY SURVEYOR  
DOUGLAS COUNTY, ORE.

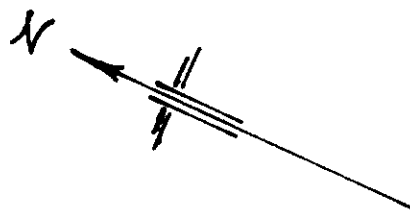
*ML*



BASE OF BEARING: 16 FT. LANE = N 28° W (DEED)

● SET 5/8" x 30" IRON ROD

Vol. 147 P. 349



**COUNTY SURVEYORS FILE DATA  
DO NOT REMOVE FROM OFFICE**

A FIELD SURVEY & PLAT FOR  
**R. S. FAIRCHILD**  
MYRTLE CREEK, ORE.

MAY 1971

SCALE: 1" = 60'

PARCEL IN NE 1/4, SEC. 32 T29S R5W W.M.  
DOUGLAS COUNTY, OREGON

MARTIN ENGINEERING SERVICE ~ MYRTLE CREEK, OREGON

SW CORNER  
HENRY ADAMS D.L.C. No. 42

S. File No. CS 55/357-1