

FILED
RECEIVED

See

AUG 9 1974

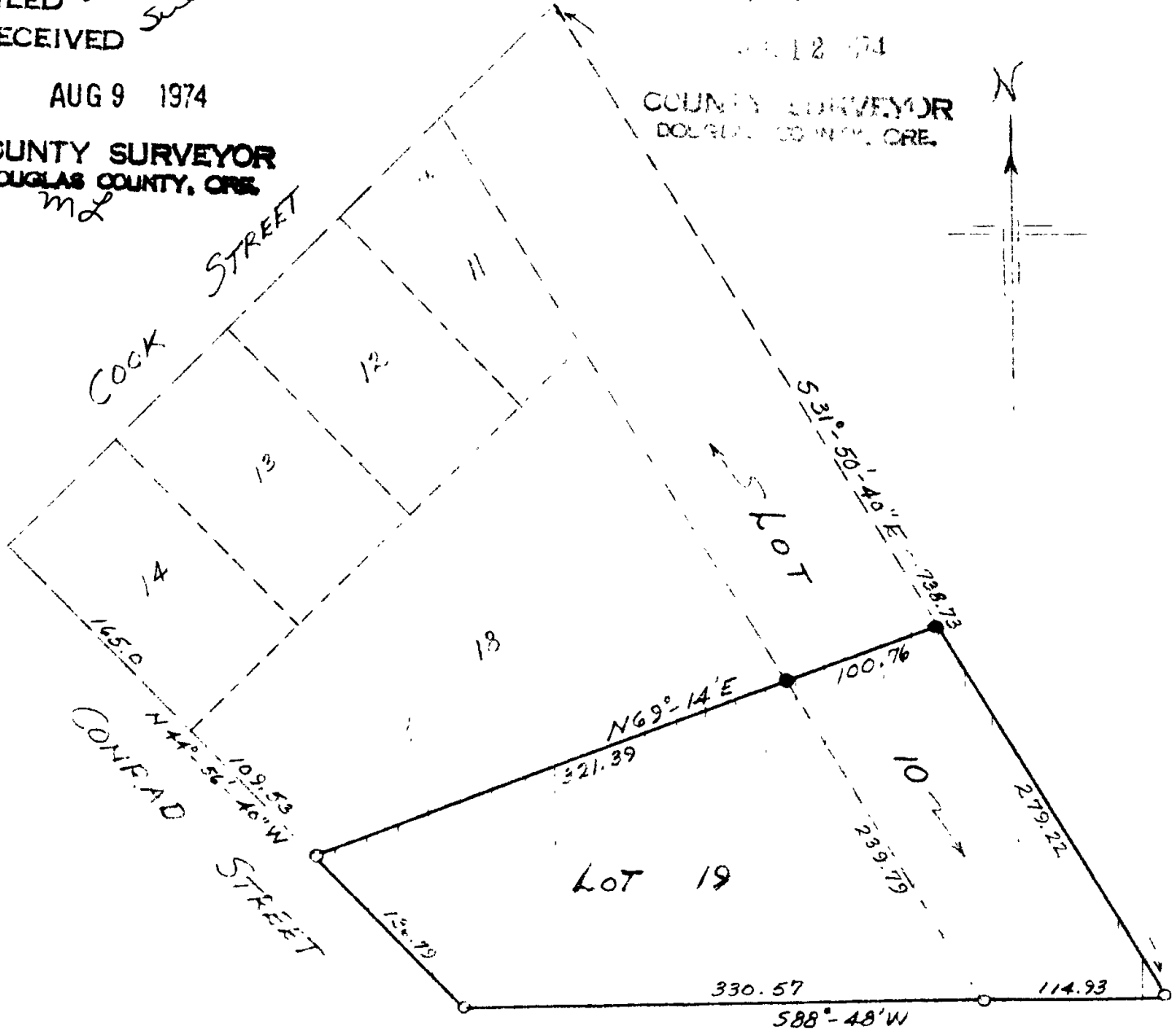
COUNTY SURVEYOR
DOUGLAS COUNTY, ORE.
mL

FILED
RECEIVED

See

AUG 12 1974

COUNTY SURVEYOR
DOUGLAS COUNTY, ORE.



• SET $\frac{3}{4}$ " x 30" IRON PIPE
**COUNTY SURVEYORS FILE DATA
DO NOT REMOVE FROM OFFICE**
FIELD SURVEY & PLAT FOR

GUERDON GLOFF
MYRTLE CREEK, OREGON

LOT 19 $\frac{1}{2}$ PART LOT 10 "4TH ADDITION TO BRIGGS ACRES"
SW $\frac{1}{4}$ SE $\frac{1}{4}$ SEC. 33 T29S R5W W.M. DOUGLAS COUNTY, OREGON

SCALE: 1" = 100'

FEBRUARY 1971

MARTIN ENGINEERING SERVICE ~ MYRTLE CREEK, OREGON

55/356-3