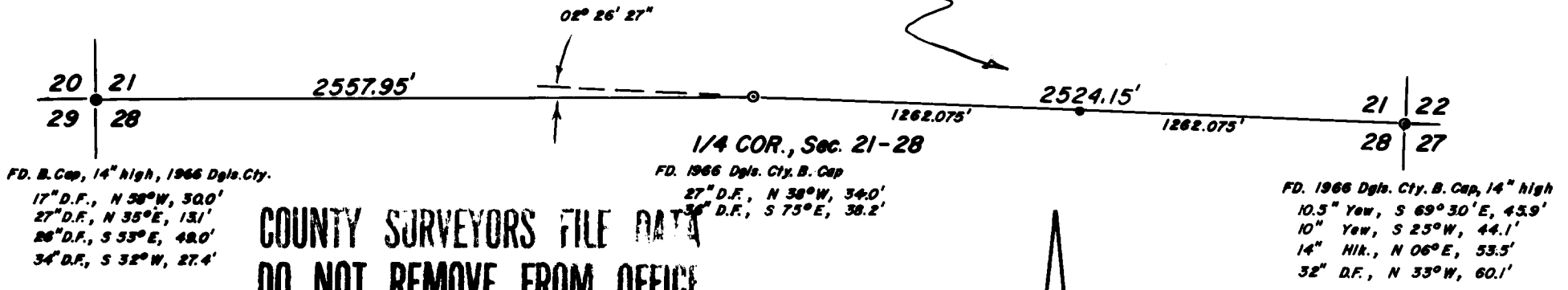


FILED ✓
RECEIVED 2/9

JUL 3 1974

COUNTY SURVEYOR
DOUGLAS COUNTY, ORE.
ma

E 1/16 COR., Sec. 21-28
Fd. 1972 Cadastral Surv. B. cap— located S 17°18'E, 0.32' from Calc. Prop. Point.
6" D.F., S 45°30'W, 109 lks.
7" D.F., S 60°30'E, 32 lks.



COUNTY SURVEYORS FILE DATA
DO NOT REMOVE FROM OFFICE

TRUE LINE SURVEY

Sec. Line, Sec. 21-28, T. 31 S., R. 4 W., W.M.

June 6-11, 1974 — Ronald A. Brandt, P.E. 6803

Survey by and for : The Robert Dollor Co., Glendale, Ore.

Equipment used: Gurley Transit and 300' Lufkin steel tape.

Purpose: to remove discrepancies of the several blazed lines none being on true course.

Results: true line brushed, blazed, painted, flagged.

SCALE : 1 in. = 600ft.





THE ROBERT DOLLAR CO.

HEAD OFFICE
311 CALIFORNIA STREET
SAN FRANCISCO 94104

FOREST PRODUCTS DIVISION

TELEPHONES

Area Code 503

OFFICE: 832-2111 SALES: 832-2131

GLENDAL, OREGON 97442

July 1, 1974

Fritz Ingram, County Land Surveyor
Douglas County Courthouse
Roseburg, Oregon 97470

Dear Mr. Ingram:

Please find enclosed a plat of our true line work on the line of Sections 21-28, T. 31 S., R. 4 W., W.M. I felt it may be helpful to others if this work became of record.

Bearing tree diameters were taken at DBH, bearings to center of scribed faces or overgrowth while distance listed are those of record or from tags. Monuments as found were all intact although quite loose due to placing less than the 30 inch depth.

Very truly,
THE ROBERT DOLLAR CO.

Ronald A. Brandt

Ronald A. Brandt
Logging Engineer