

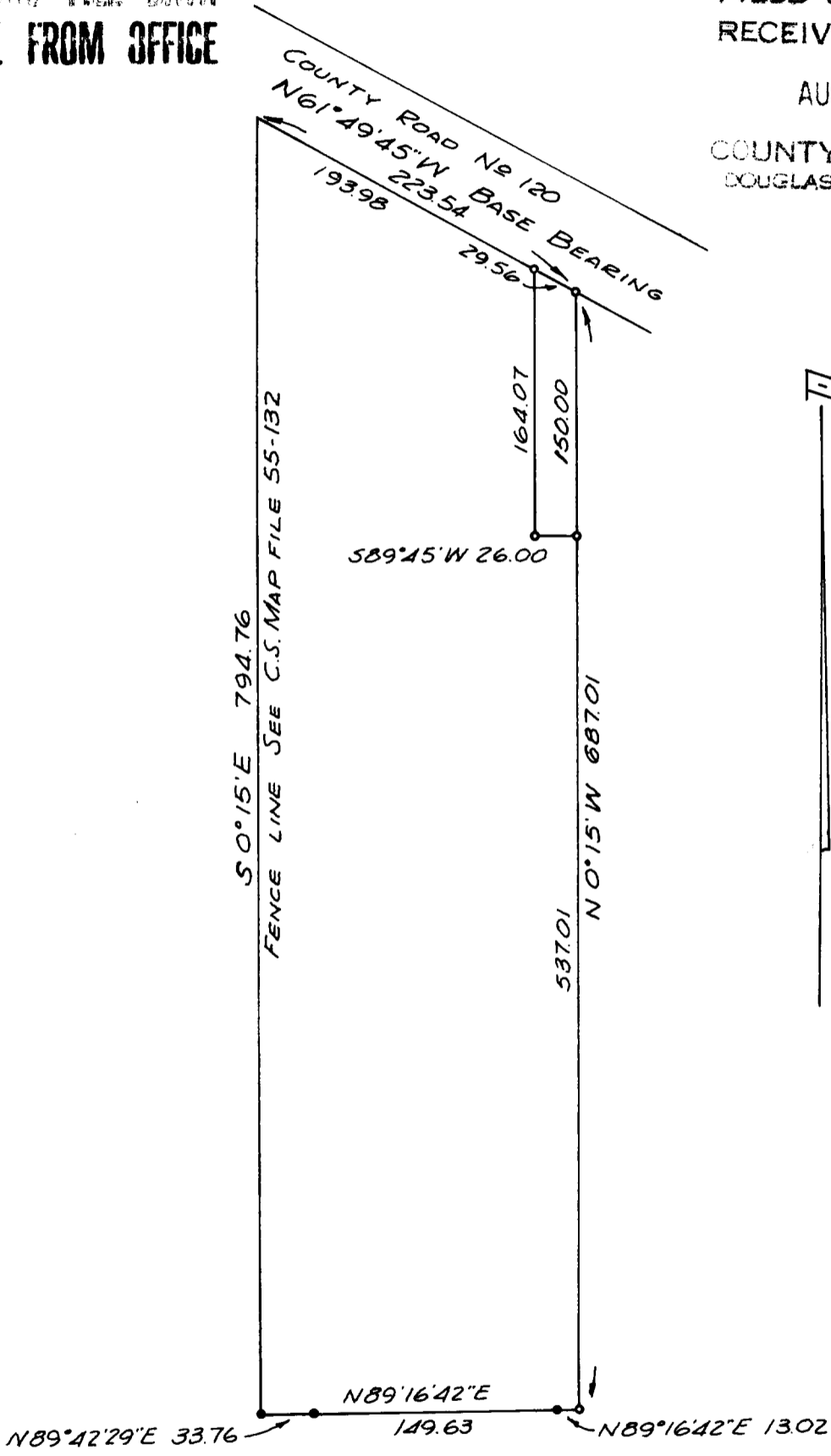
SURVEY TO DETERMINE BOUNDARIES
 LOT 12, BLOCK 3, S. L. & W. CO. PLAT N
 SECTION 22, T. 25 S., R. 5 W., W.M.
 SURVEYED FOR VONDELL BLACK
 SURVEYED BY R. H. GEE AUGUST, 1974
 SCALE 1" = 100'

COUNTY SURVEYOR'S FILE DATA
 DO NOT REMOVE FROM OFFICE

FILED *✓*
 RECEIVED *See*

AUG 30 1974

COUNTY SURVEYOR
 DOUGLAS COUNTY, ORE.
mz



RIDGEWATER SUBDIVISION

- DENOTES 5/8" I.R. FD.
- DENOTES 5/8" I.R. SET

