

**COUNTY SURVEYORS FILE DATA**  
**DO NOT REMOVE FROM OFFICE**

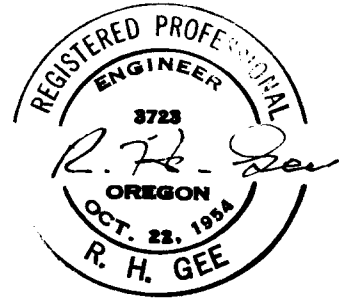
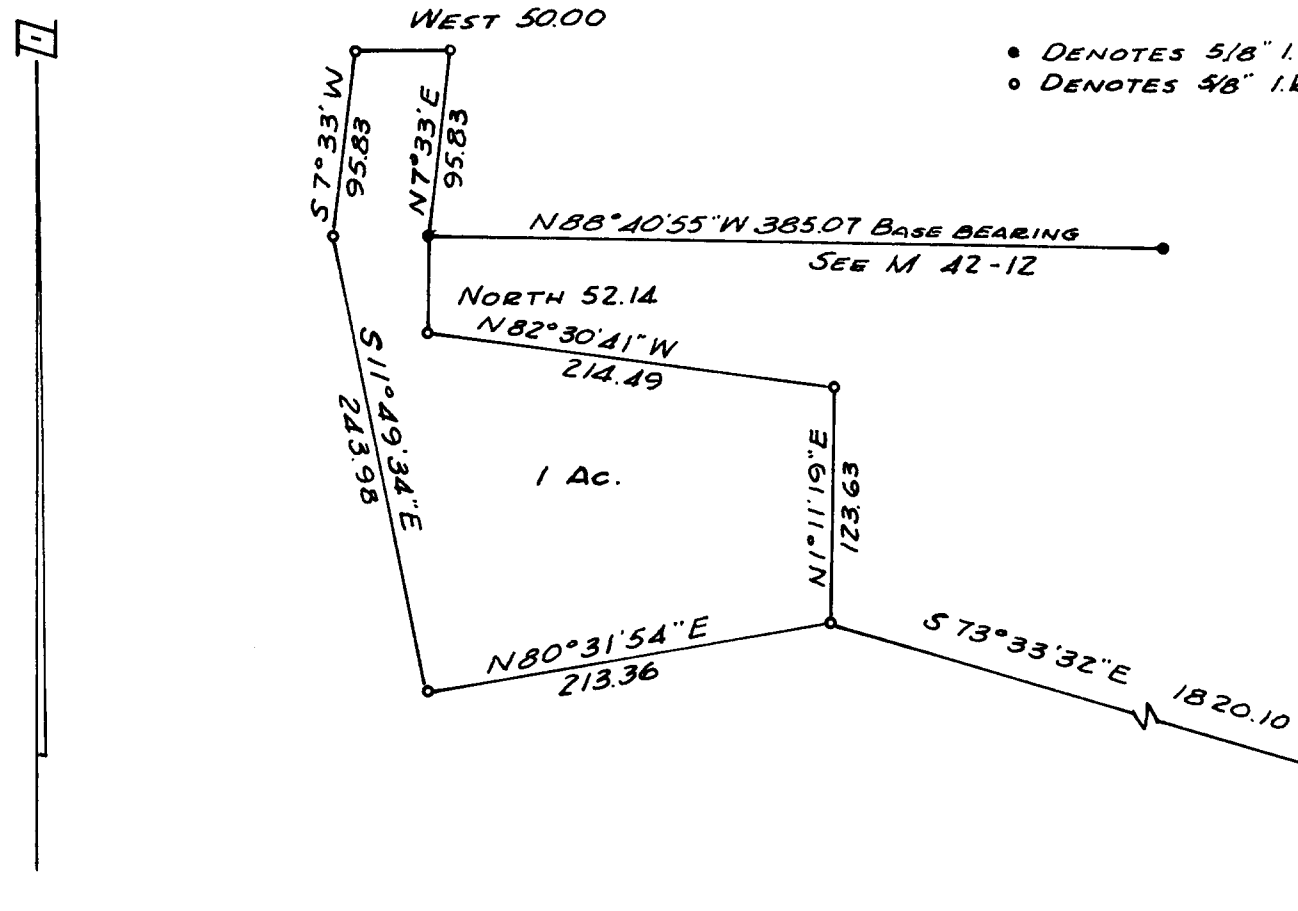
SURVEY FOR DEED DESCRIPTION  
 SECTION 26, T. 26 S., R. 7 W., W.M.  
 SURVEYED FOR R. K. WILSON  
 SURVEYED BY R. H. GEE JUNE, 1974  
 SCALE 1" = 100'

FILED ✓  
 RECEIVED \$

JUN 26 1974

COUNTY SURVEYOR  
 DOUGLAS COUNTY, ORE.  
 mR

C. S. File No. 25/353-2



C. S. File No. 25/353-2