

55-353/55

COUNTY SURVEYORS FILE DATA DO NOT REMOVE FROM OFFICE

FILED ✓
RECEIVED SS

SURVEY FOR PROPERTY DESCRIPTION

JUL 29 1974

SECTION 26, T. 26 S., R. 7 W., W.M.

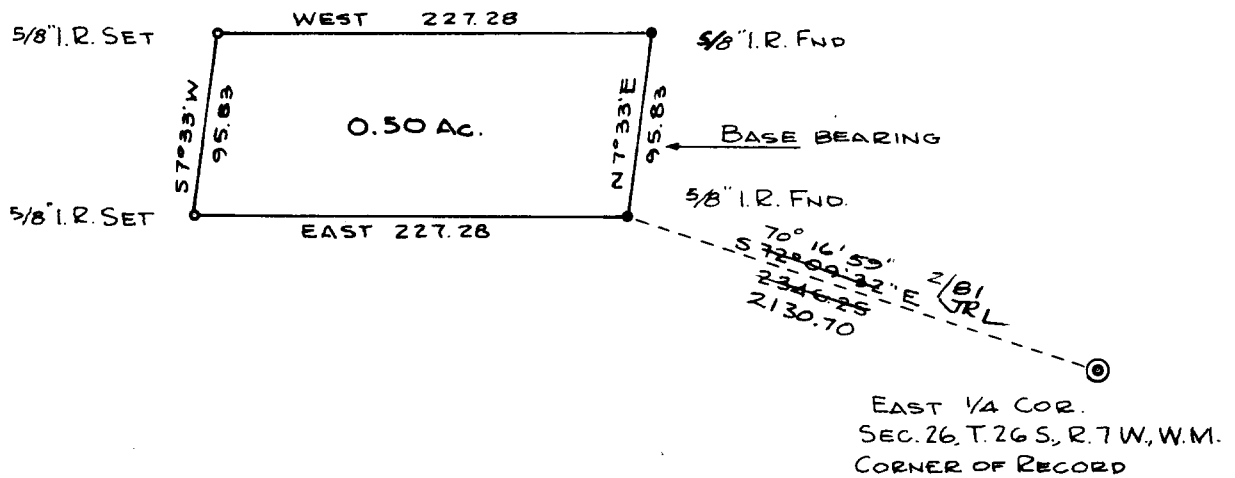
COUNTY SURVEYOR
DOUGLAS COUNTY, ORE

SURVEYED FOR R. K. WILSON

md

SURVEYED BY R. H. GEE JULY, 1974

SCALE 1" = 100'



SEE C.S. 55-353

