

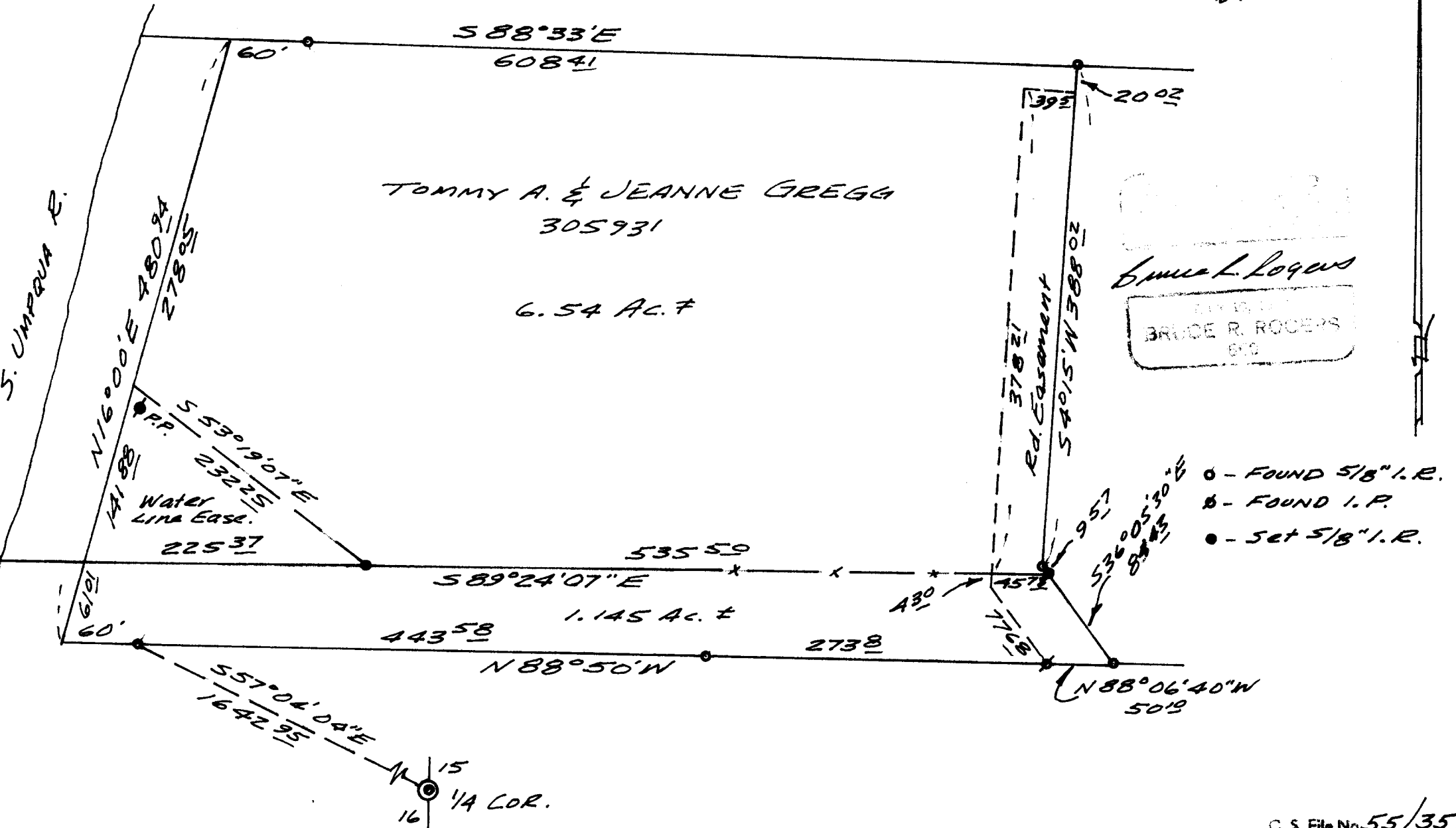
SURVEY FOR DEED DESCRIPTION
 IN SEC. 16, T. 27 S., R. 6 W. W.M.
 FOR TOMMY GREGG
 BY BRUCE ROGERS
 JULY 4, 1974
 1" = 100'

COUNTY SURVEYORS FILE DATA
 DO NOT REMOVE FROM OFFICE

FILED *J*
 RECEIVED *2/4*

JUL 11 1974

COUNTY SURVEYOR
 DOUGLAS COUNTY, ORE.
mx



Bruce L. Rogers
 BRUCE R. ROGERS
 810