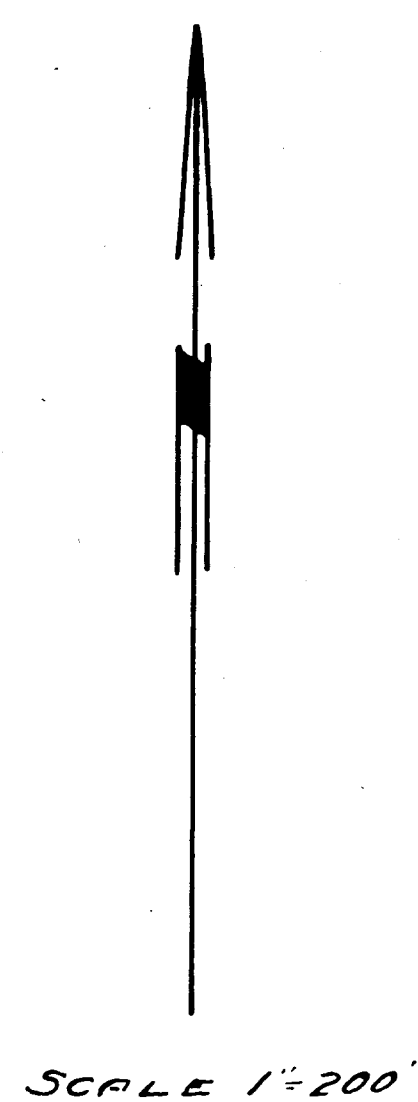
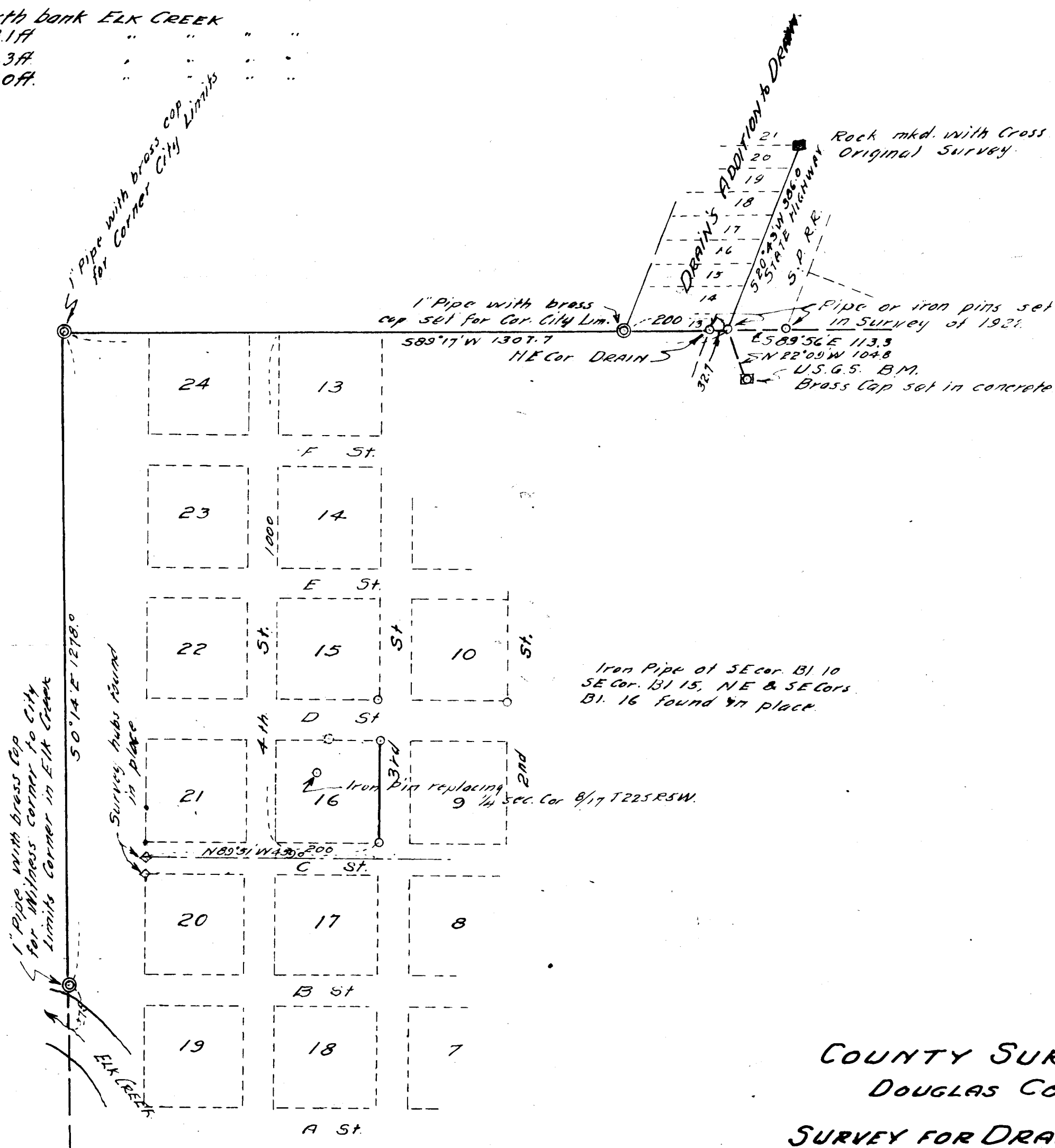


FILED  
RECEIVED 2/4

MAY 20 1974

1309 COUNTY SURVEYOR  
1109 DOUGLAS COUNTY, ORE.  
198.6 m

NOTE: Pipe with brass caps are all stamped  
COUNTY SURVEYOR OFFICE DRAIN LIMITS  
Pipe at SW corner DRAIN ADDITION  
24" Fir bears S50°02'W 30.9 ft. scribed Drain Limits CS BT  
24" Fir " N16°29'E 50.6 ft  
Pipe at NW corner DRAIN  
8" Fir S18°40'W 15.4 ft  
14" Fir N85°30'E 9.3 ft  
Pipe Witness corner North bank Elk Creek  
6" Willow S87°W 3.1 ft  
6" Willow S28°W 2.3 ft  
6" Willow S45°E 3.0 ft



COUNTY SURVEYOR'S OFFICE  
DOUGLAS COUNTY OREGON  
SURVEY FOR DRAIN CITY LIMITS

BEN. B. IRVING County Surveyor  
February 1947

COUNTY SURVEYORS FILE DATA  
DO NOT REMOVE FROM OFFICE