

SURVEY TO SET PROPERTY CORNERS IN LOT 9, HEIDEN PARK, SEC. 19, T.27S. R.5W.W.M.

FOR: H.M.S. DEVELOPMENT CO.

BY: BAUGHMAN SURVEYING SERVICE

JANUARY 1975

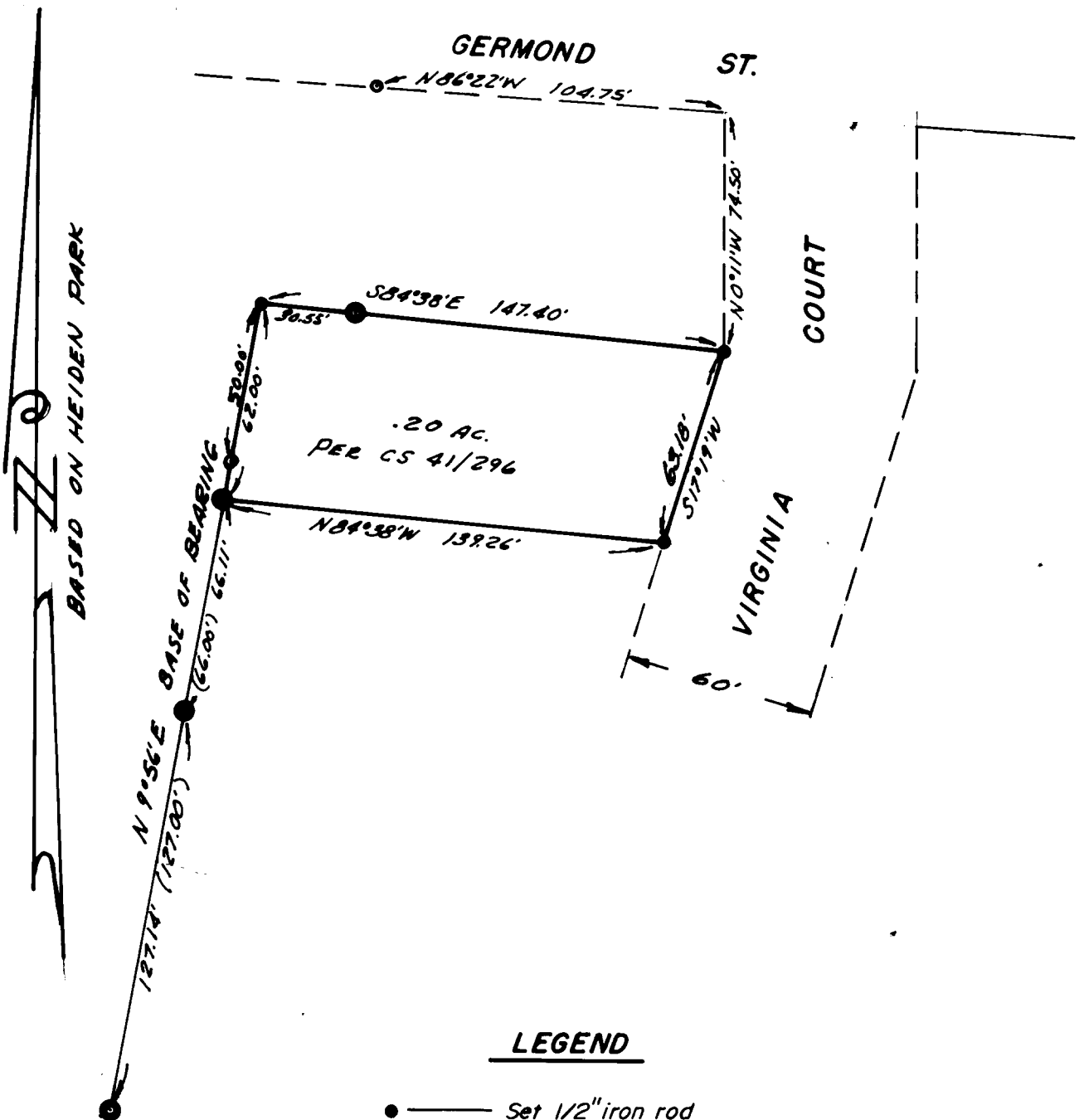
SCALE: 1" = 50'

FILED ✓
RECEIVED KR

JAN 10 1975

COUNTY SURVEYORS FILE DATA
DO NOT REMOVE FROM OFFICE

COUNTY SURVEYOR
DOUGLAS COUNTY, ORE.
✓



REGISTERED
PROFESSIONAL
LAND SURVEYOR

William H. Baughman

OREGON
JULY 4 1966
WILLIAM H. BAUGHMAN
36

CS 5-11-75 55/349-3