

# SURVEY TO SET PROPERTY CORNERS IN SECTION 4, T.28S., R.6W.W.M.

FOR: PHILLIP JOHNSON

BY: BAUGHMAN SURVEYING SERVICE

MAY 1974

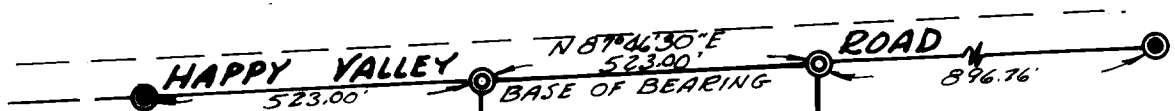
SCALE: 1"=300'

FILED ✓  
RECEIVED ✓

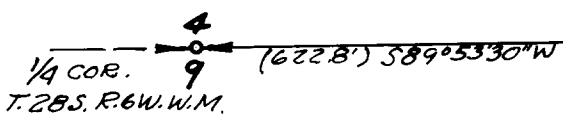
MAY 15 1974

COUNTY SURVEYOR  
DOUGLAS COUNTY, ORE.  
md

COUNTY SURVEYORS FILE DATA  
DO NOT REMOVE FROM OFFICE



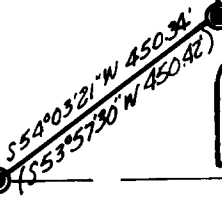
- LEGEND**
- — FOUND 3/8" I.P.
  - ⊙ — SET 5/8" I.P.
  - — 1/4 COR. PER M33-60



N 0° 07' E 2299.86' (2298.77')

26.62 AC. ±

S 0° 05' 46\"/>



REGISTERED  
PROFESSIONAL  
LAND SURVEYOR

*Glenn S. Baughman*

OREGON  
JULY 14, 1961  
GLENN S. BAUGHMAN  
536