

SEC 24
T 30S R 6W WM

RIDDLE ORE

FILED *z*
RECEIVED *24*

APR 15 1974

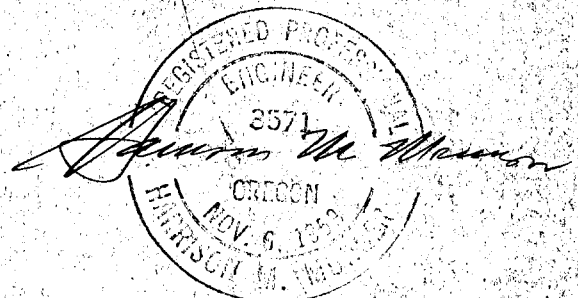
RESTORATION OF LOT CORNERS

COUNTY SURVEYOR
DOUGLAS COUNTY, ORE.

MR

Beginning at the initial point of the Myrtle Park Addition to the Town of Riddle, I found a one-half iron pin at 2.63 feet North and 153.42 feet West of said initial point, this being the North-west corner of a lot containing approximately 0.25 acres, owned by Heinrich and Dorothy A. Schmidt.

Following course and distance given in deed description, I ran S 56° 30' E 87.00 feet and found a one-half inch iron pin; running thence N 33° 30' W a three-quarter inch iron pipe eighteen inches long was set, denoting the above described initial point of said Myrtle Park Addition, at a distance of 126.4 feet; running thence N 56° 30' W a three-quarter inch iron pipe eighteen inches long was set at a distance of 87.00 feet; running thence S 33° 30' W a distance of 126.4 feet to the first found point.



5-8-54

received
4-12-74
db

FILED ✓
RECEIVED 7/4

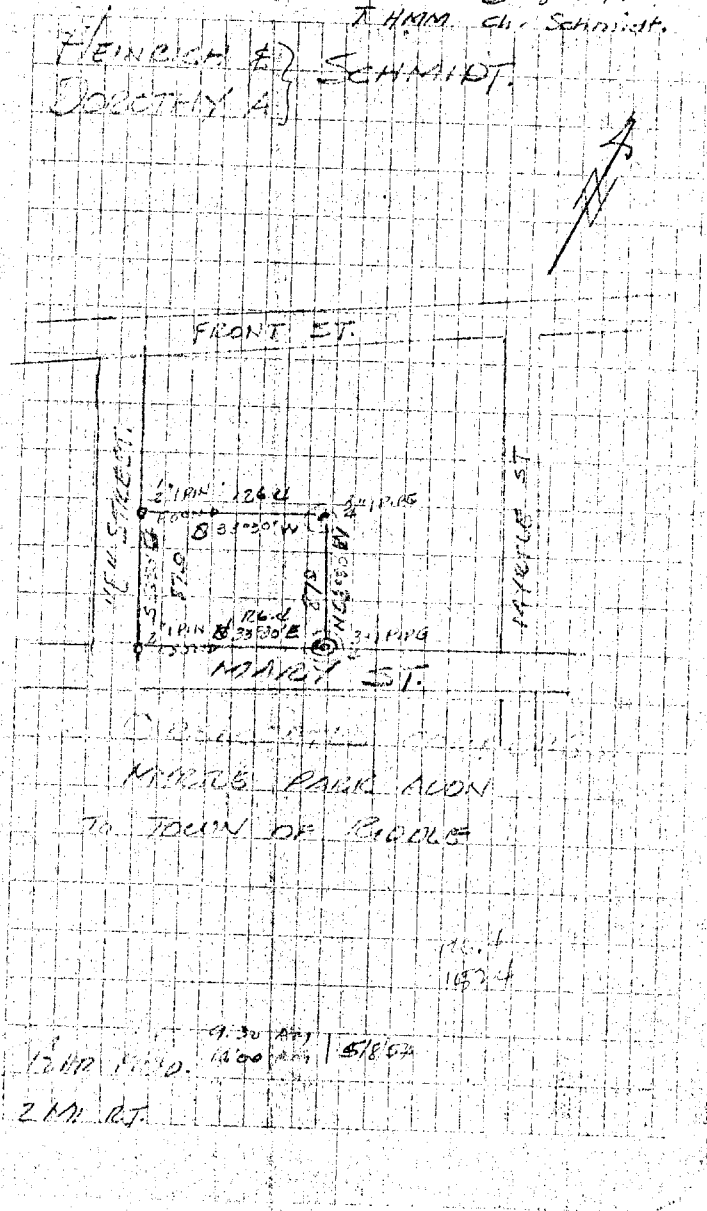
APR 15 1974

COUNTY SURVEYOR
DOUGLAS COUNTY, ORE.

5-8-54.

J. HMM. Ch. Schmidt.

HEINRICH E. SCHMIDT.
DOROTHY A.



FILED ✓
RECEIVED 2/4

APR 15 1974

COUNTY SURVEYOR
DOUGLAS COUNTY, ORE.
ml

SCHMIDT

132.50 W	87 =	83389	55174	N 72.548	W 40.012
552.03 W	126.4	55174	83389	S 69.765	W 105.404

N 2.683

W 153.422

25.04