

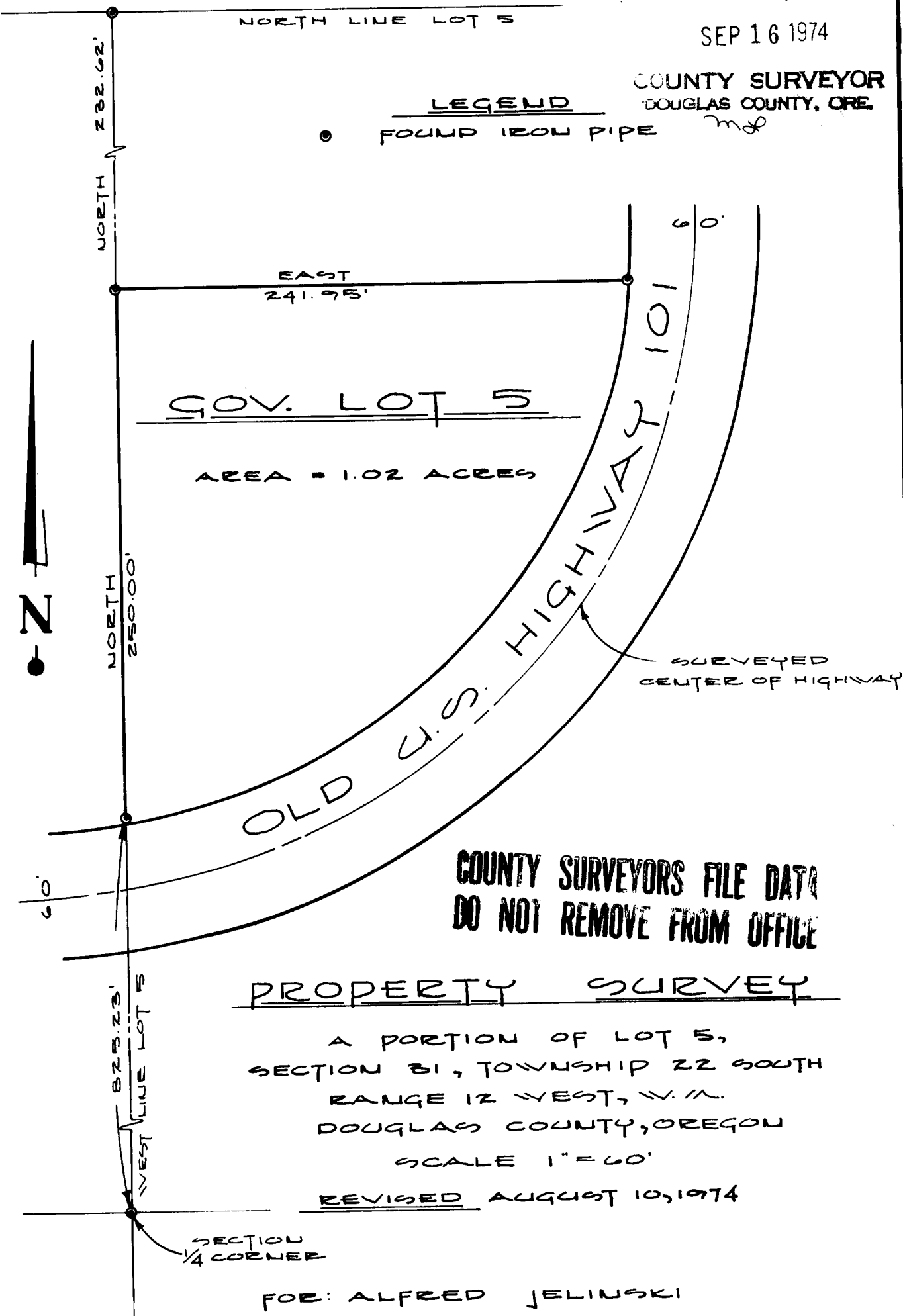
FILED ✓  
RECEIVED ✓

SEP 16 1974

COUNTY SURVEYOR  
DOUGLAS COUNTY, ORE.

LEGEND

● FOUND IRON PIPE



COUNTY SURVEYORS FILE DATA  
DO NOT REMOVE FROM OFFICE

PROPERTY SURVEY

A PORTION OF LOT 5,  
SECTION 31, TOWNSHIP 22 SOUTH  
RANGE 12 WEST, W.M.  
DOUGLAS COUNTY, OREGON  
SCALE 1" = 60'

REVISED AUGUST 10, 1974

FOR: ALFRED JELINSKI

REGISTERED  
PROFESSIONAL  
LAND SURVEYOR

*Robert W. Wade*

OREGON  
OCTOBER 4, 1957  
ROBERT W. WADE  
433



ENGINEERS & PLANNERS  
COOS BAY, OREGON / 5th AND HIGHLAND 97420