

FILED  
RECEIVED

SEP 16 1974

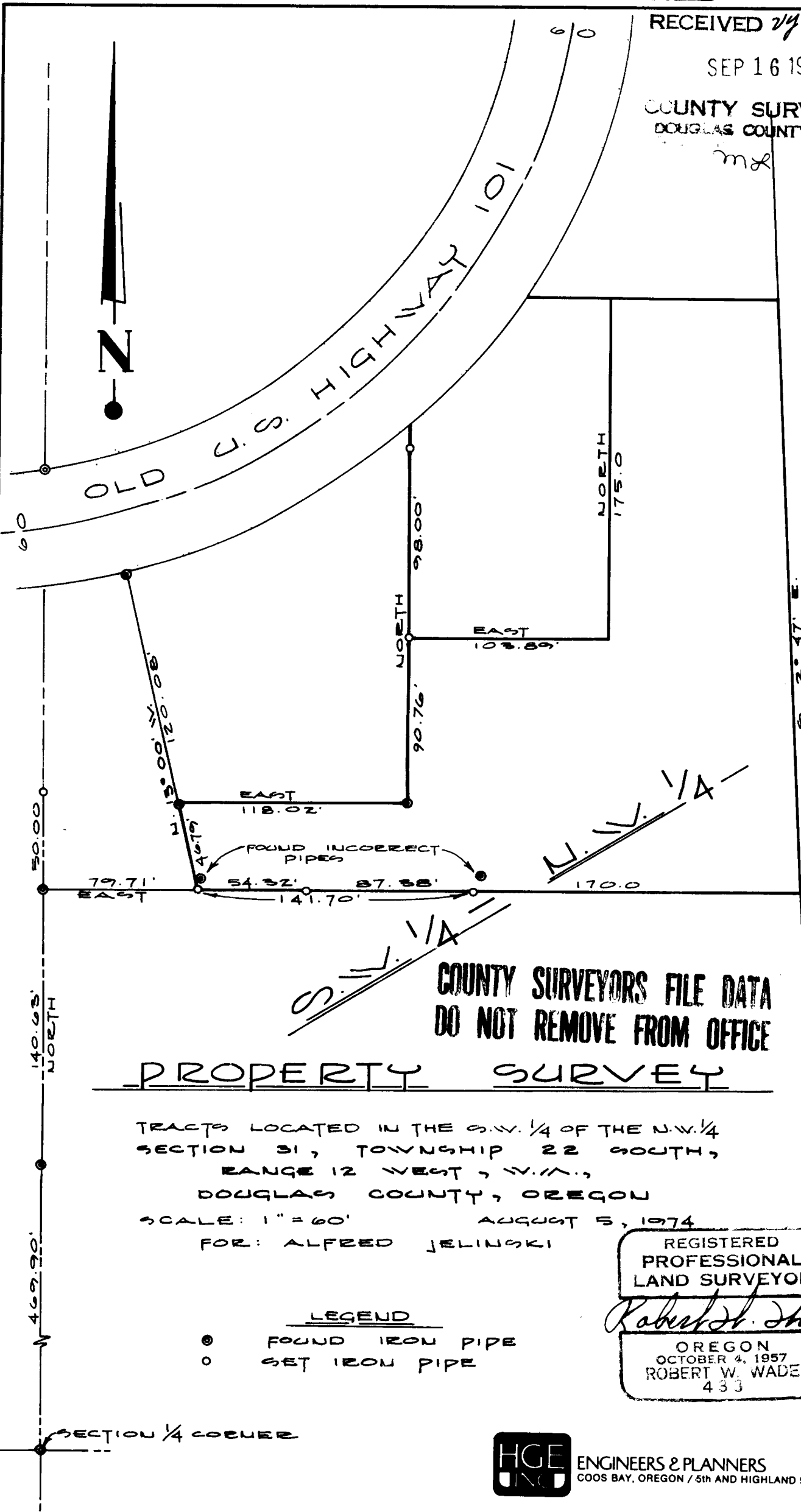
COUNTY SURVEYOR  
DOUGLAS COUNTY, ORE.

*mx*



OLD U.S. HIGHWAY 101

U.S. HIGHWAY 101



**COUNTY SURVEYORS FILE DATA  
DO NOT REMOVE FROM OFFICE**

PROPERTY SURVEY

TRACTS LOCATED IN THE S.W. 1/4 OF THE N.W. 1/4  
SECTION 31, TOWNSHIP 22 SOUTH,  
RANGE 12 WEST, N.W.A.,  
DOUGLAS COUNTY, OREGON

SCALE: 1" = 60'      AUGUST 5, 1974  
FOR: ALFRED JELINSKI

LEGEND

- FOUND IRON PIPE
- SET IRON PIPE

REGISTERED  
PROFESSIONAL  
LAND SURVEYOR

*Robert W. Wade*

OREGON  
OCTOBER 4, 1957  
ROBERT W. WADE  
433

SECTION 1/4 CORNER



ENGINEERS & PLANNERS  
COOS BAY, OREGON / 5th AND HIGHLAND 97420