

SURVEY IN SEC. 12, T 23 S, R 10 W. W. M.
DOUGLAS COUNTY, ORE.

SURVEYED FOR - LLOYD KEELAND
SURVEYED BY - W.S. BARNES

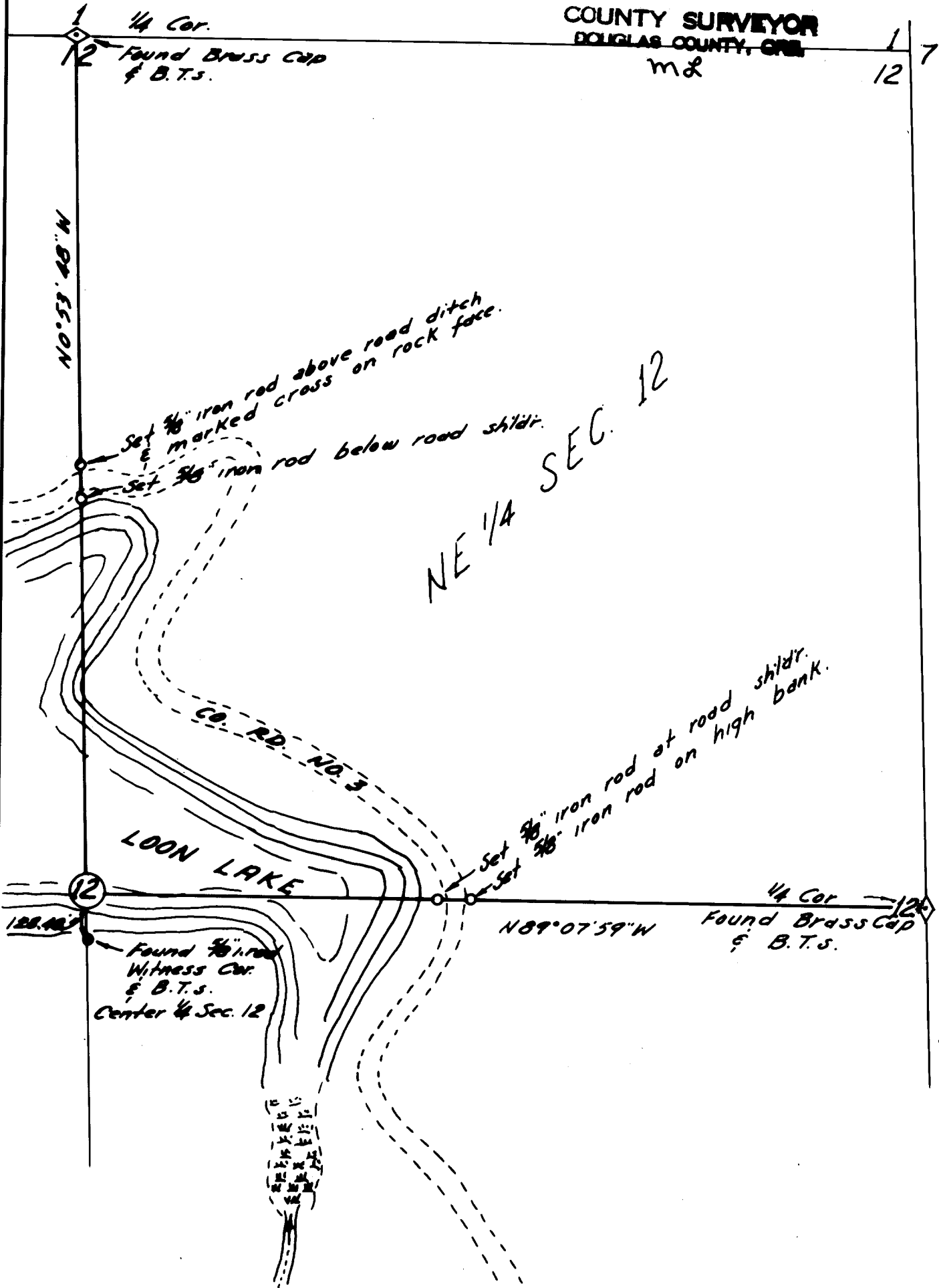
MAY 1974
SCALE 1" = 400'

COUNTY SURVEYORS FILE DATA
DO NOT REMOVE FROM OFFICE

FILED ✓
RECEIVED 7/3

MAY 28 1974

COUNTY SURVEYOR
DOUGLAS COUNTY, ORE.
m2



Base bearing taken from N-S
centerline of Sec. 12.

Reference - C.S. M 36-42.