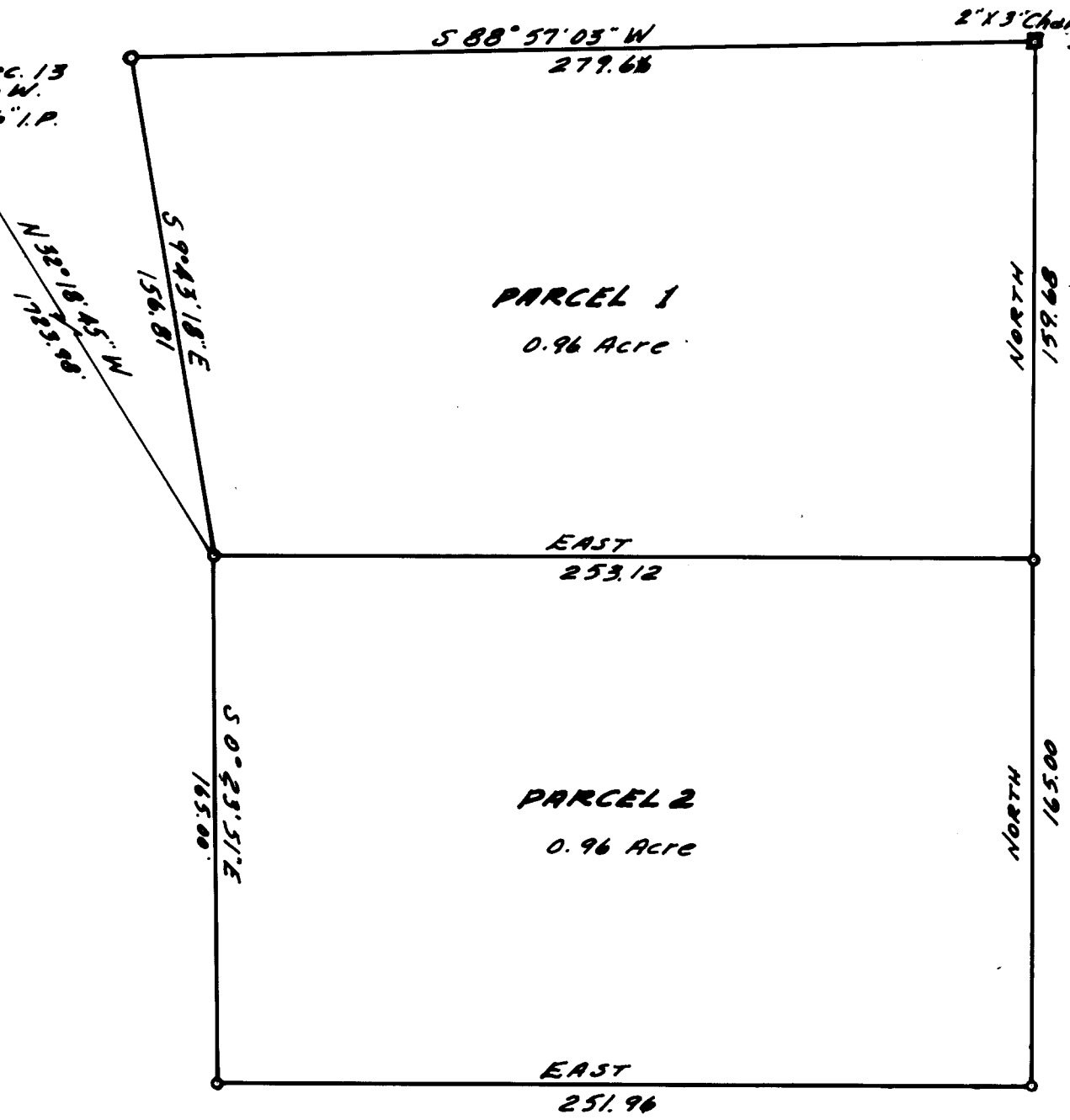


COUNTY SURVEYORS FILE DATA  
DO NOT REMOVE FROM OFFICE

*SURVEY FOR LEGAL DESCRIPTIONS  
IN SEC. 13, T29S, R6W.W.M.*

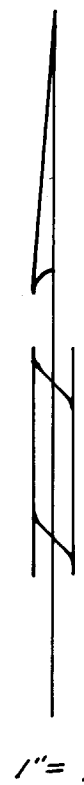
SURVEYED FOR - KENNETH RONK  
SURVEYED BY - W.S. BARNES APR. 1974

N.W. Cor. Sec. 13  
T29S, R6W.  
1 1/2" I.P.



FILED ✓  
RECEIVED ✓  
APR 17 1974

COUNTY SURVEYOR  
DOUGLAS COUNTY, ORE.  
*ml*



○ Denotes 5/8" iron rods set.  
○ " " 1/2" " pipes set.  
Bearings based on magnetic North. Var. 20°.

