

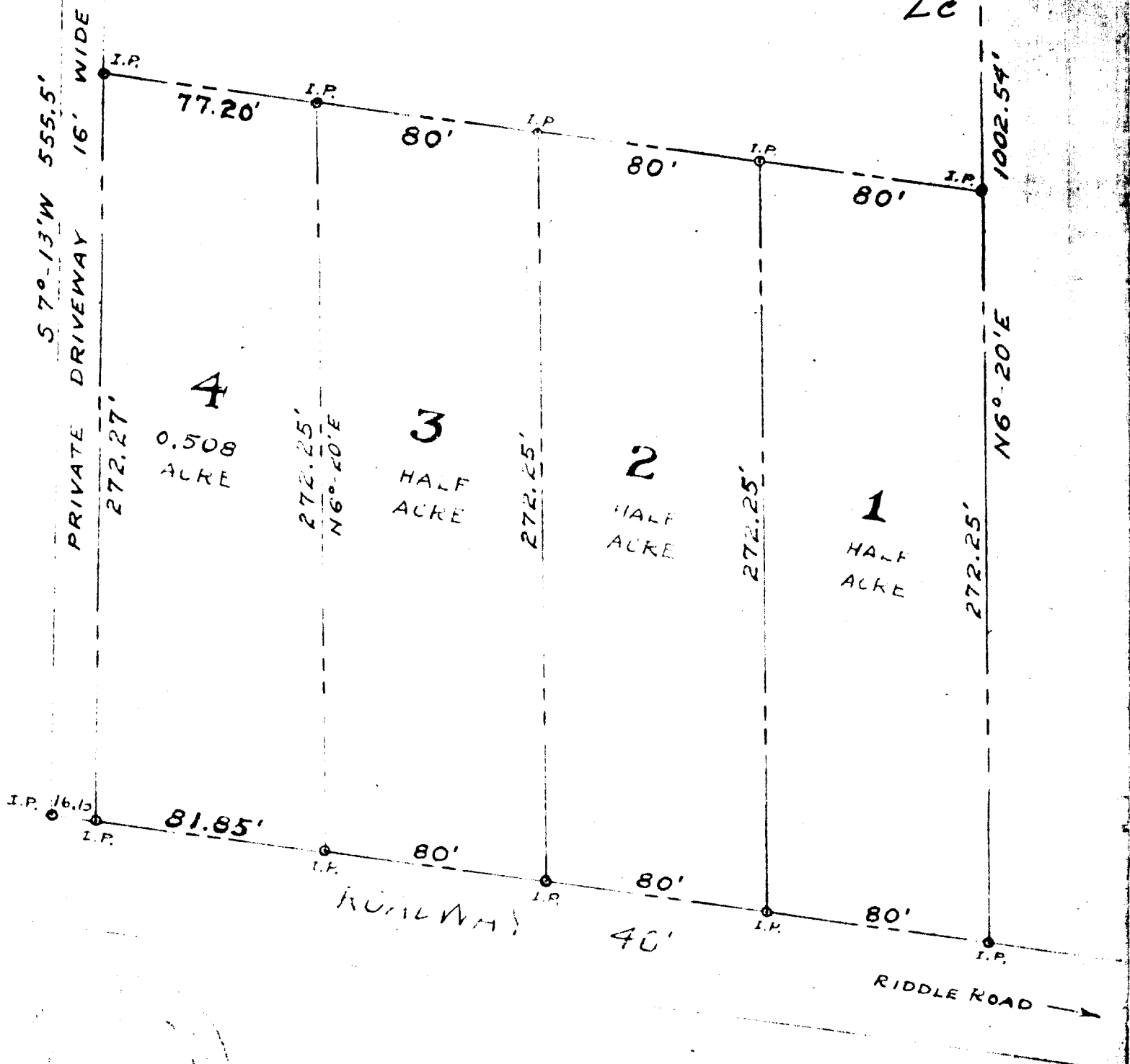
MAP SHOWING GEORGE M. GIBSON PARCELS

SECTION 15 T 30 S R 6 W W.M.
DOUGLAS COUNTY
OREGON

FILED
RECEIVED LC

MAY 18 1978

COUNTY SURVEYOR
DOUGLAS COUNTY, ORE.
LC



J.R. Laugherty

Surveyed & Plotted By
JAMES R. LAUGHERTY
CIVIL SANITARY ENGR.
REGISTERED PROFESSIONAL ENGINEER
ROSEBURG, ORE.

SCALE 1" = 50'

DONE IN 1941

COUNTY SURVEYORS FILE DATA
DO NOT REMOVE FROM OFFICE

COUNTY SURVEYORS FILE DATA
DO NOT REMOVE FROM OFFICE

- COPY ONLY -