

SURVEY TO SET PROPERTY CORNERS IN SECTION 32, T.29S., R.8W.W.M.

FOR: TIM BLIXSETH

BY: BAUGHMAN SURVEYING SERVICE

APRIL 1974

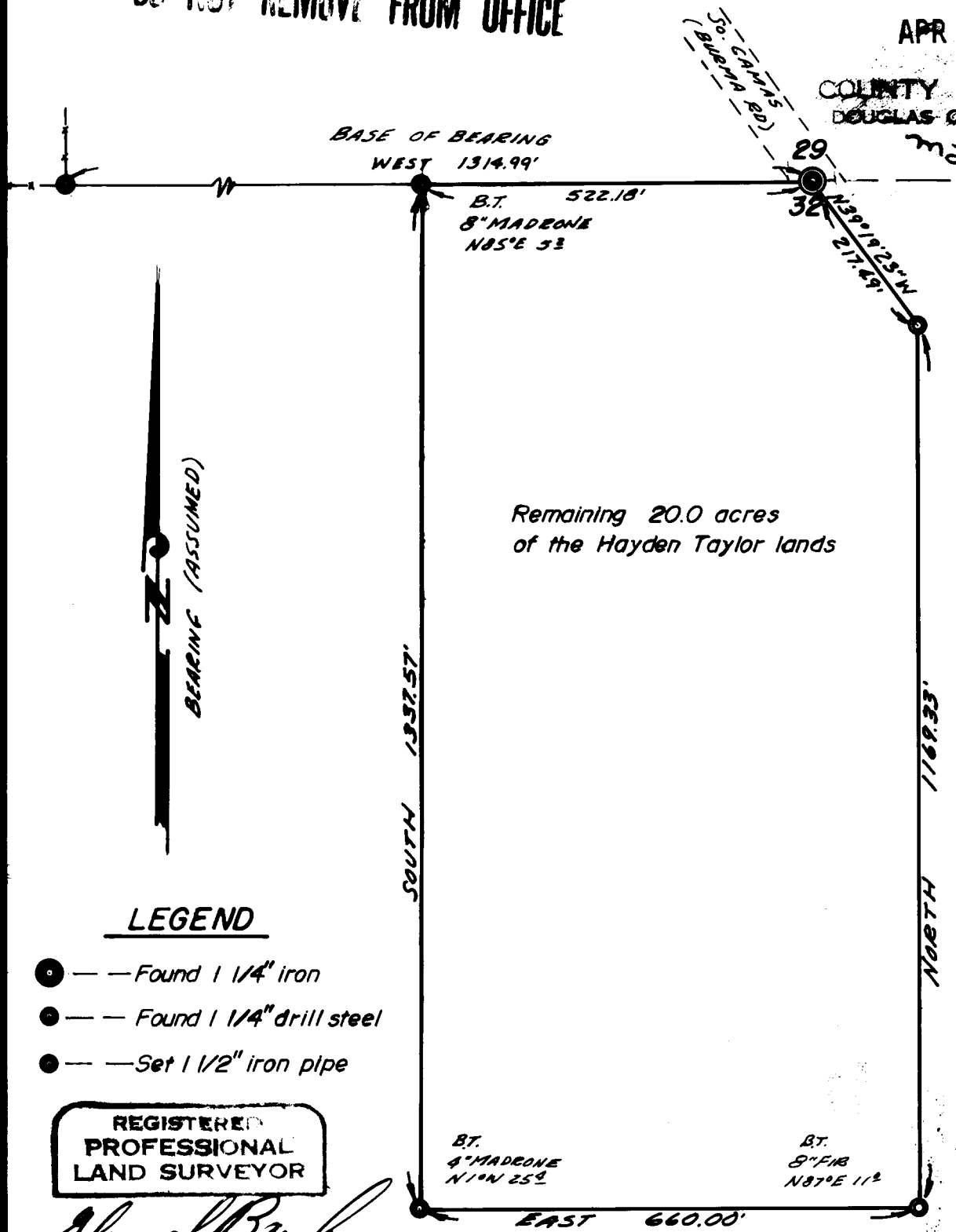
SCALE: 1" = 200'

COUNTY SURVEYORS FILE DATA
DO NOT REMOVE FROM OFFICE

FILED
RECEIVED *ml*

APR 15 1974

COUNTY SURVEYOR
DOUGLAS COUNTY, ORE.



Remaining 20.0 acres
of the Hayden Taylor lands

LEGEND

- — Found 1/4" iron
- — Found 1/4" drill steel
- — Set 1/2" iron pipe

REGISTERED
PROFESSIONAL
LAND SURVEYOR

Glenn S. Baughman

OREGON
JULY 14, 1961
GLENN S. BAUGHMAN
536