

C.S. FILE NO. 55/333-3

FIELD SURVEY & PLAT FOR **COUNTY SURVEYORS FILE DATA**
VILLAGE REALTY **DO NOT REMOVE FROM OFFICE**
MYRTLE CREEK, ORE.

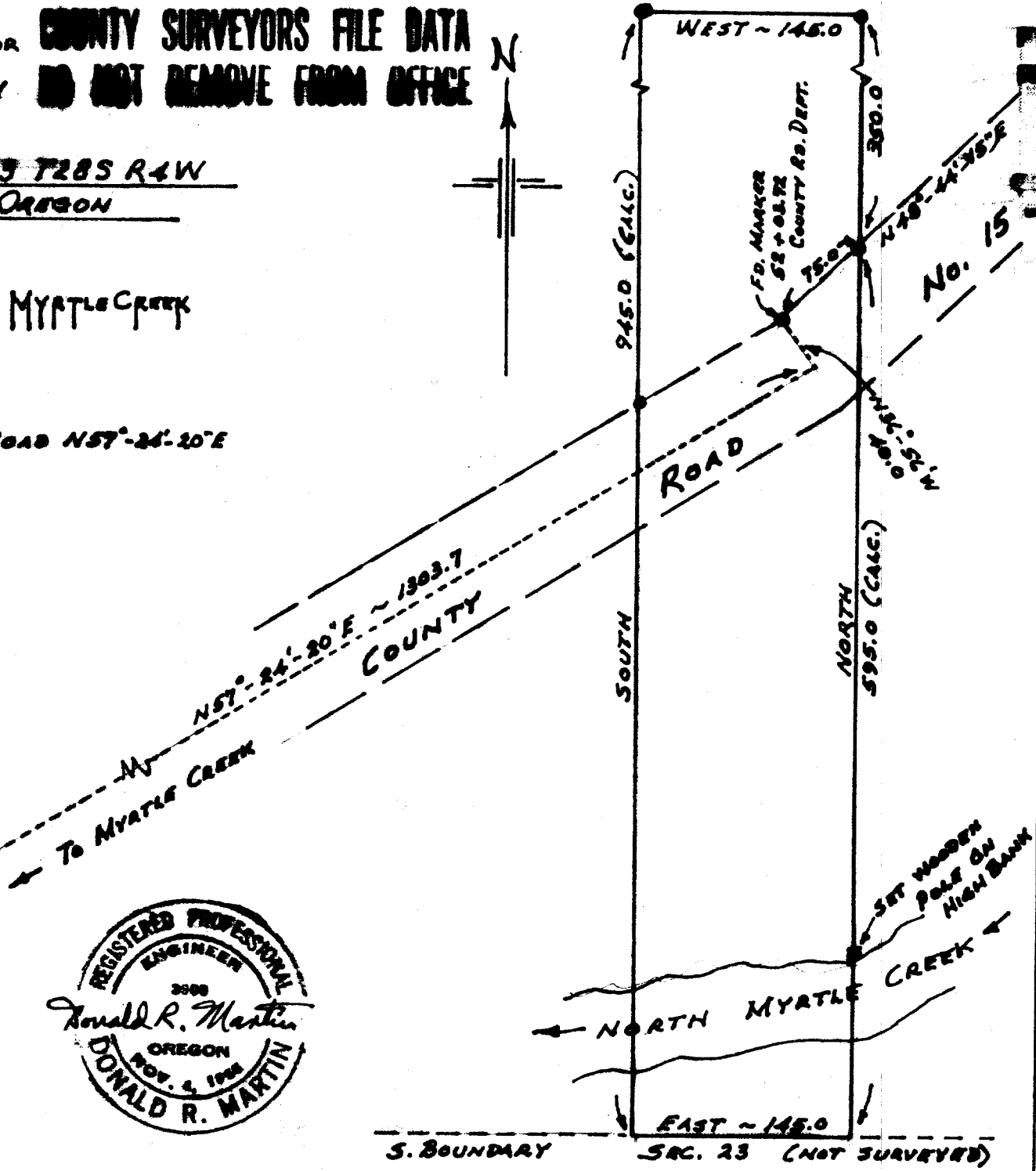
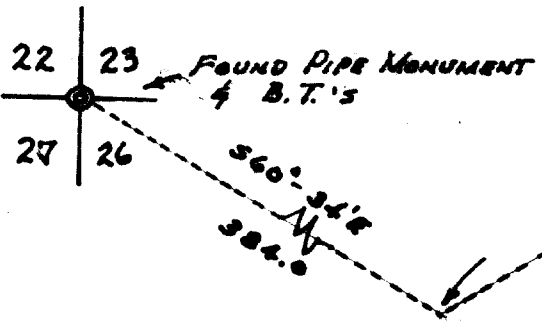
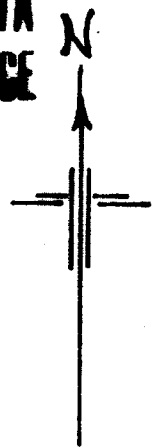
PARCEL IN SW 1/4 SEC. 23 T28S R4W
W.M. DOUGLAS COUNTY, OREGON

SCALE: 1" = 100'

MARTIN ENGINEERING SERVICE ~ MYRTLE CREEK

BASE OF BEARINGS: COUNTY ROAD N57°-24'-20"E

• SET 5/8" x 30" IRON ROD



FILED
RECEIVED Pd

JAN 24 1974

COUNTY SURVEYOR
DOUGLAS COUNTY, ORE.

ml

AUGUST 1971

C.S. FILE NO. 55/333-3