

FIELD SURVEY & PLAT FOR  
JOYCE DOBYNS

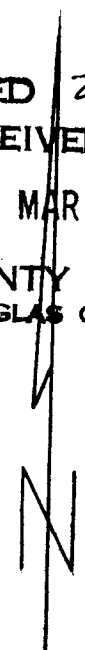
FIVE ACRE PARCEL IN SECTIONS  
20 & 29 T27S R7W W.M.  
DOUGLAS COUNTY, OREGON

FILED *v*  
RECEIVED *v*  
MAR 18 1974  
COUNTY SURVEYOR  
DOUGLAS COUNTY, ORE.  
*md*

- Set  $\frac{5}{8}$ " Iron Rod
- Found  $\frac{5}{8}$ " Iron Rod

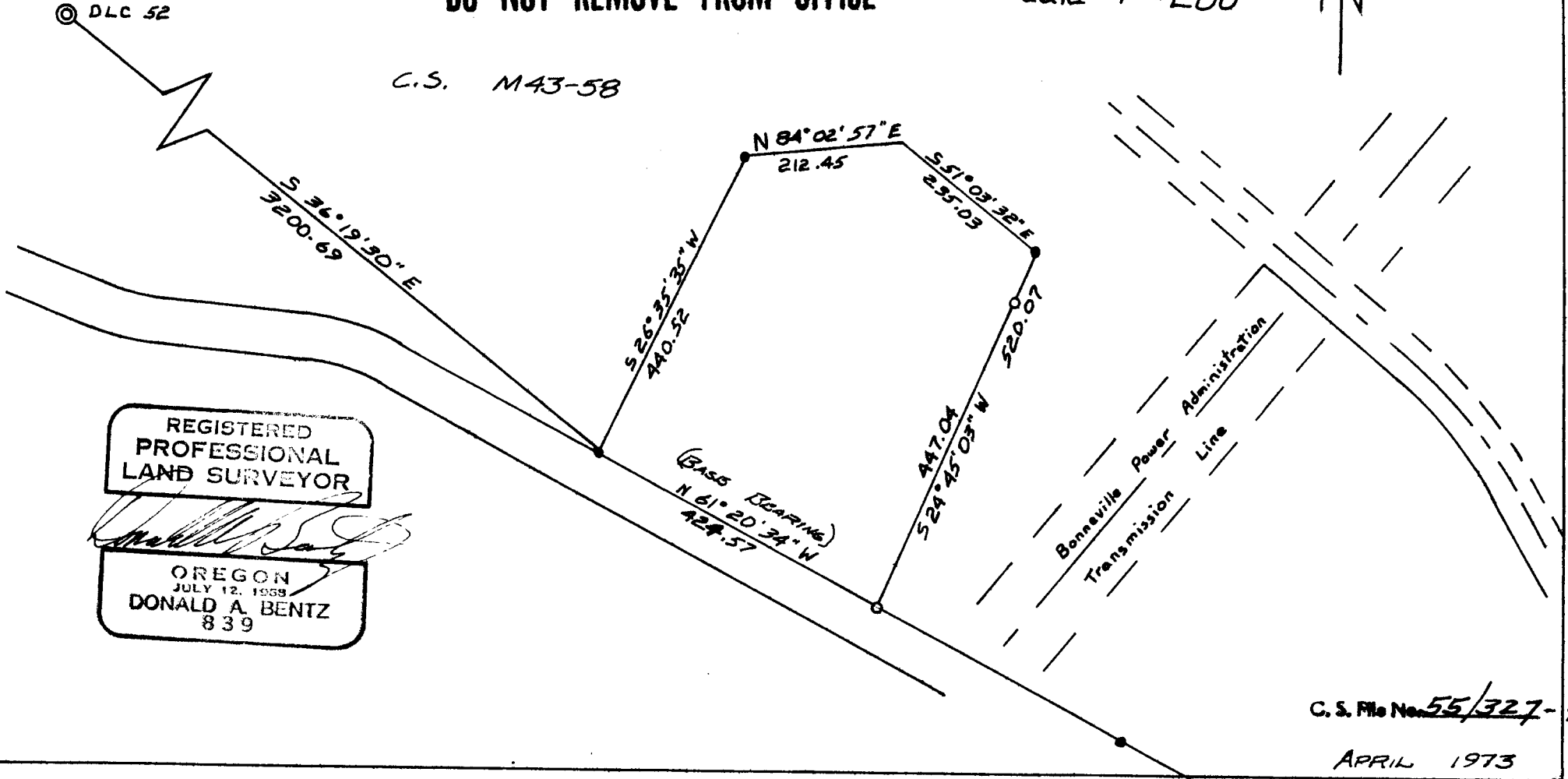
COUNTY SURVEYORS FILE DATA  
DO NOT REMOVE FROM OFFICE

Scale 1" = 200'



C.S. M43-58

NW Corner  
DLC 52



REGISTERED  
PROFESSIONAL  
LAND SURVEYOR

*Donald A. Bentz*

OREGON  
JULY 12, 1959  
DONALD A. BENTZ  
839

C. S. File No. 55/327-2

APRIL 1973