

E-52E/55  
 SURVEY TO SET PROPERTY CORNERS  
 IN SEC. 17, T. 32S, R. 4 W. N. M.  
 FOR CARL ENGSTROM  
 by BRUCE ROGERS  
 APR., 1974  
 1" = 30'

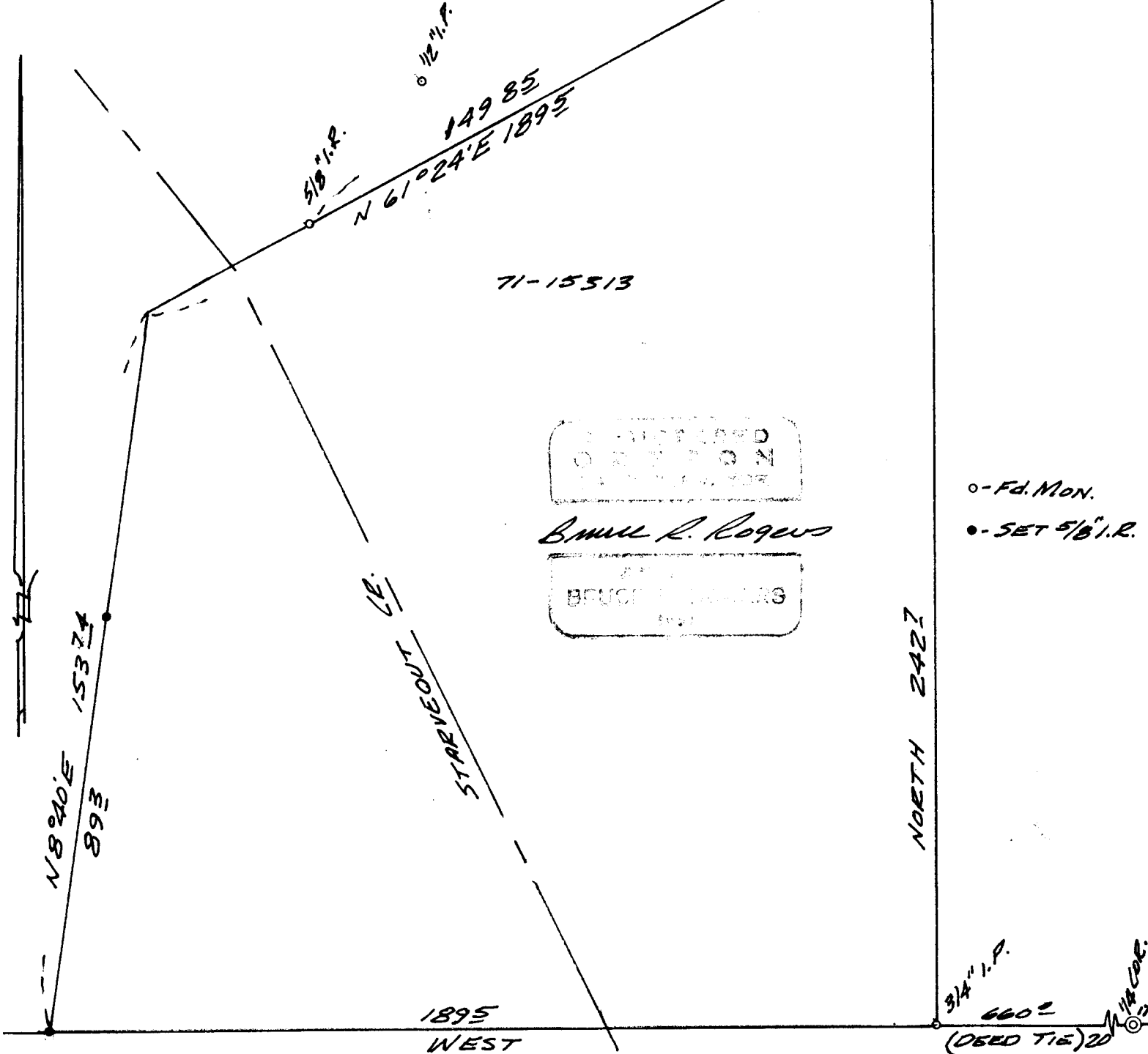
FILED  
 RECEIVED

MAY 6 1974

COUNTY SURVEYOR  
 DOUGLAS COUNTY, ORE.

COUNTY SURVEYORS FILE DATA  
 DO NOT REMOVE FROM OFFICE

73-12837



71-15513

REGISTERED  
 SURVEYOR  
 DOUGLAS COUNTY, ORE.

Bruce R. Rogers

BRUCE ROGERS  
 1971

○ - FD. MON.  
 ● - SET 5/8" I.R.

NORTH 2427

1895 WEST

3/4" I.P.  
 6602  
 (DEED TIE) 20  
 1/4" I.P.