

SURVEY TO SET PROPERTY CORNERS IN LOTS 23, 24, 25 & 26, BLOCK 75, SUBDIVISION "A", KINNEYS IMPROVED PLAT SECTION 18, T.27S., R.5W.W.M.

FOR: LEROY LEMON

BY: BAUGHMAN SURVEYING SERVICE

DECEMBER 1973

SCALE: 1"=20'

FILED ✓
RECEIVED 7/4

DEC 27 1973

COUNTY SURVEYOR
DEGLAS COUNTY, ORE.

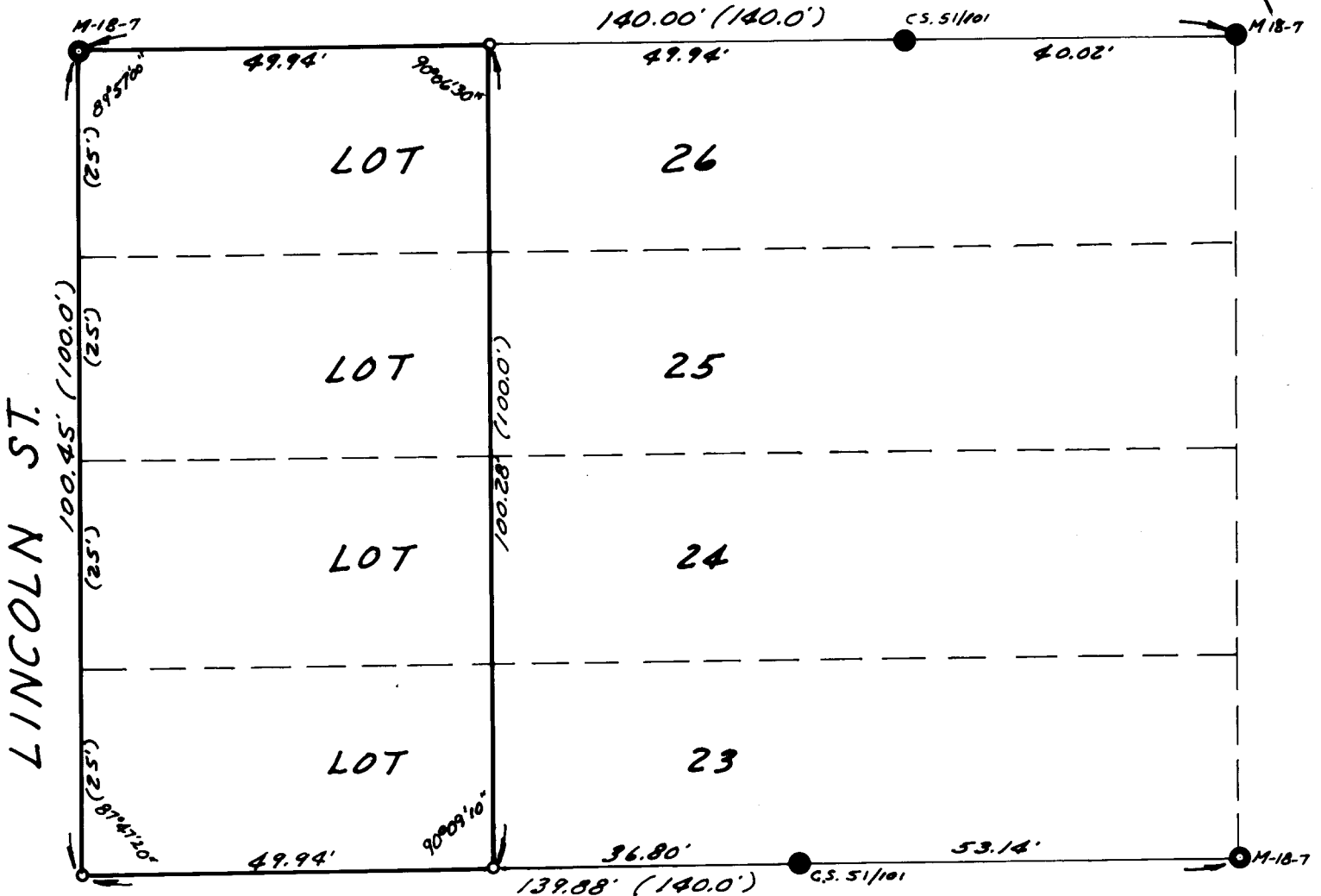
COUNTY SURVEYORS FILE DATA
DO NOT REMOVE FROM OFFICE

REGISTERED
PROFESSIONAL
LAND SURVEYOR

OREGON
JULY 14, 1961
GLENN S. BAUGHMAN
536



KLAMATH AVE.



LEGEND

- -- SET 7/8" I.R.
- -- FOUND 3/4" I.P.
- -- FOUND 1/2" I.P.
- -- FOUND I.R. W/CAP