

**SURVEY FOR DESCRIPTION WITHIN A FAMILY
IN LOT 4, AMENDED PLAT OF RIO VISTA
IN SECTION 25, T.26S. R.6W.W.M.**

FOR: ROY BRADLEY

BY: BAUGHMAN SURVEYING SERVICE

NOVEMBER 1973

SCALE: 1"=40'

FILED ✓
RECEIVED 27

NOV 29 1973

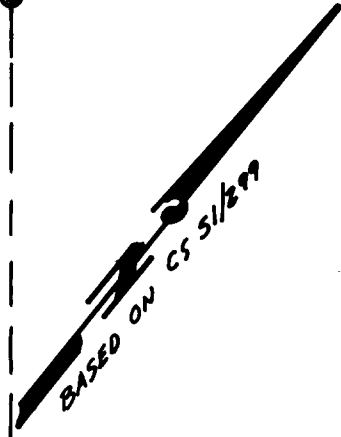
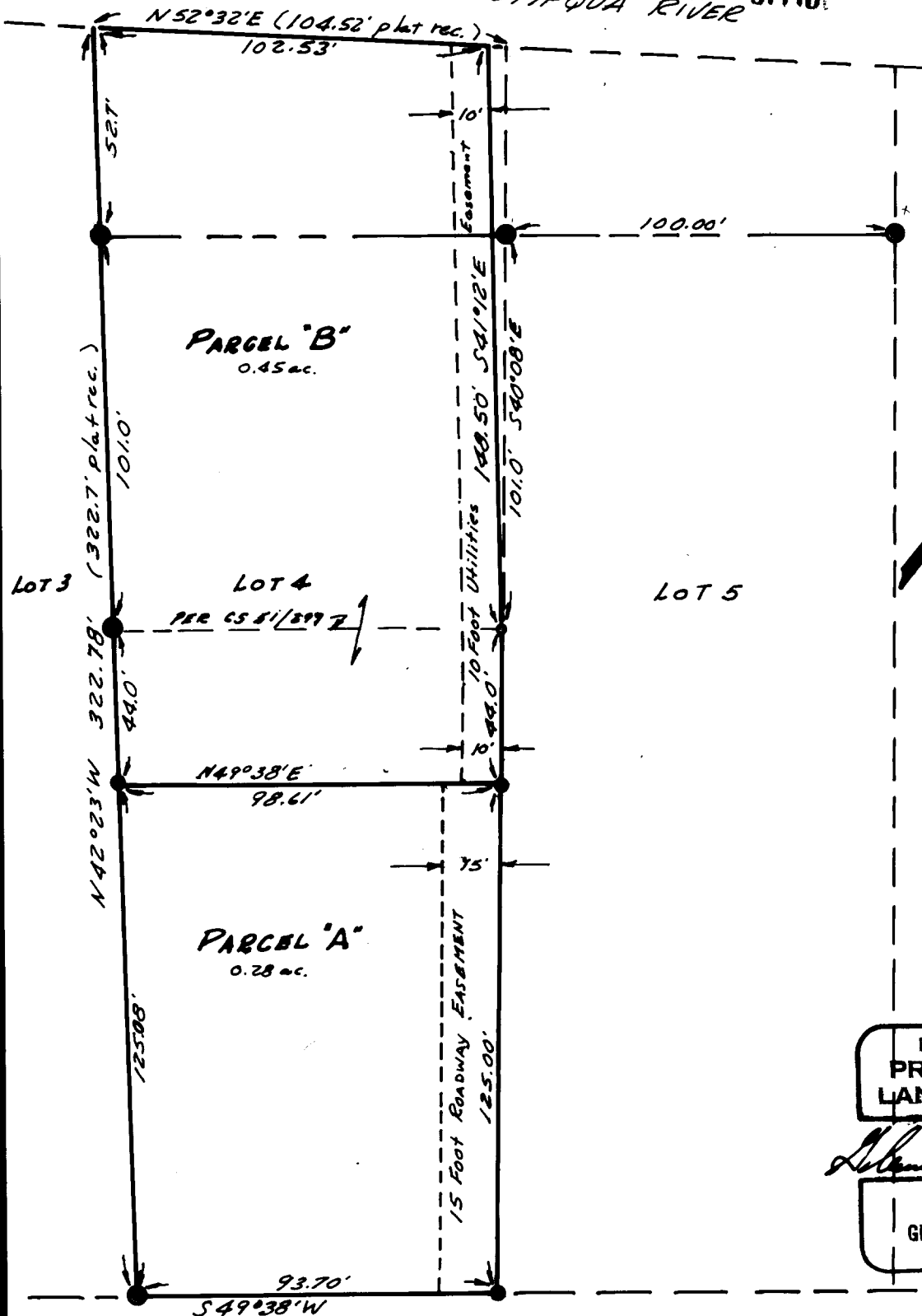
COUNTY SURVEYOR
DOUGLAS COUNTY, ORE

LEGEND

- --- SET 5/8" I.R.
- --- FOUND 3/4" I.P.
- --- NOT SET

**COUNTY SURVEYORS FILE DATA
DO NOT REMOVE FROM OFFICE**

← NORTH UMPQUA RIVER



REGISTERED
PROFESSIONAL
LAND SURVEYOR

Glenn S. Baughman

OREGON
JULY 14, 1961
GLENN S. BAUGHMAN
536

PIONEER WAY-60'