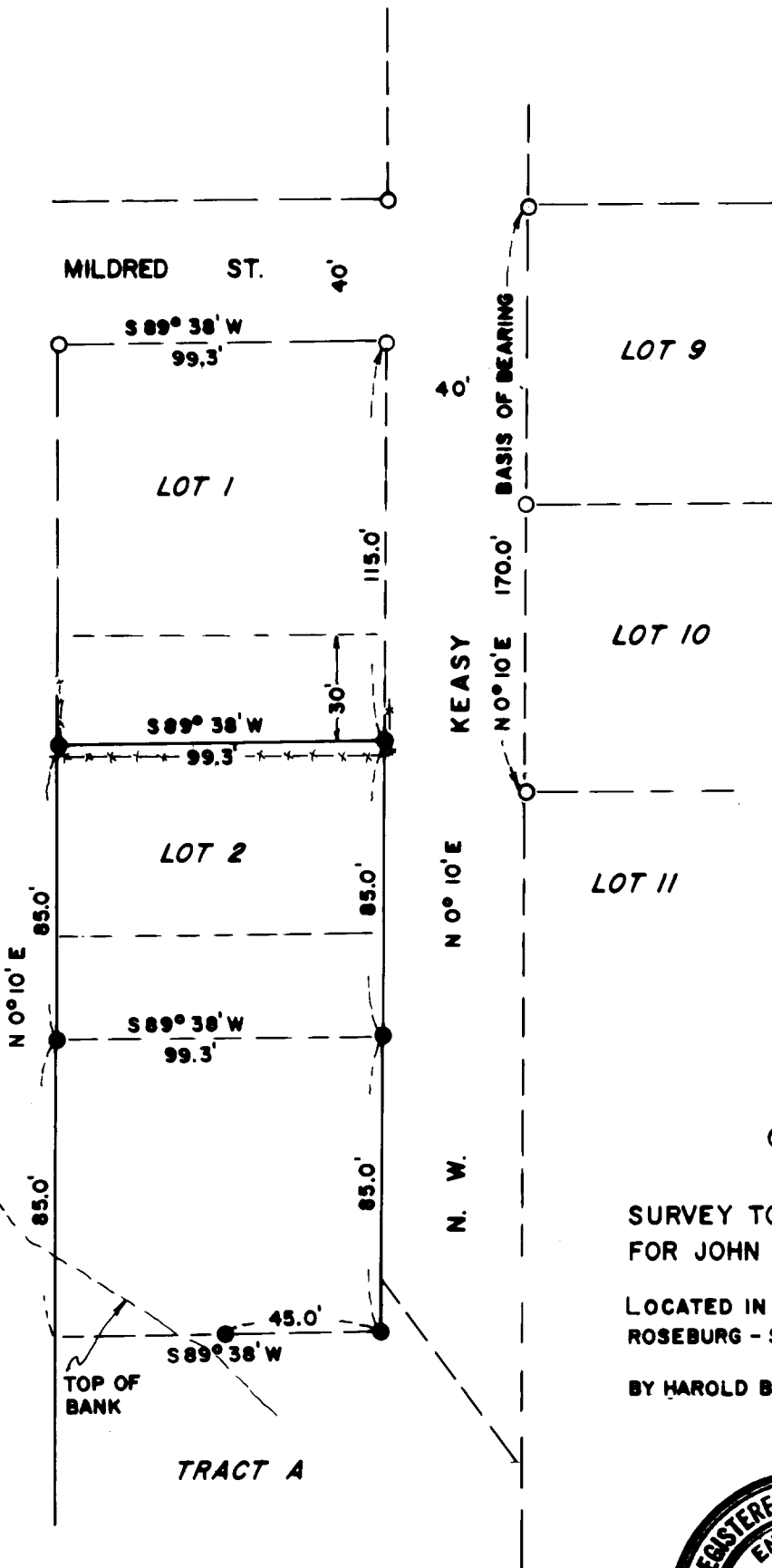


COUNTY SURVEYORS FILE DATA
 DO NOT REMOVE FROM OFFICE

FILED *ml*
 RECEIVED *ml*

OCT 29 1974

COUNTY SURVEYOR
 DOUGLAS COUNTY, ORE.
ml



1" = 50'
 OCT. 1974

SURVEY TO LOCATE BOUNDARY
 FOR JOHN PETERSON

LOCATED IN CEDAR VALE SUBDIVISION
 ROSEBURG - SEC. 14, T27S, R6W, W.M.

BY HAROLD BALL CIVIL ENGINEER

- FD. ANGLE IRON
- SET 5/8" IRON ROD

