

COUNTY SURVEYORS FILE DATA
DO NOT REMOVE FROM OFFICE

FILED ✓
RECEIVED ✓

OCT 30 1973

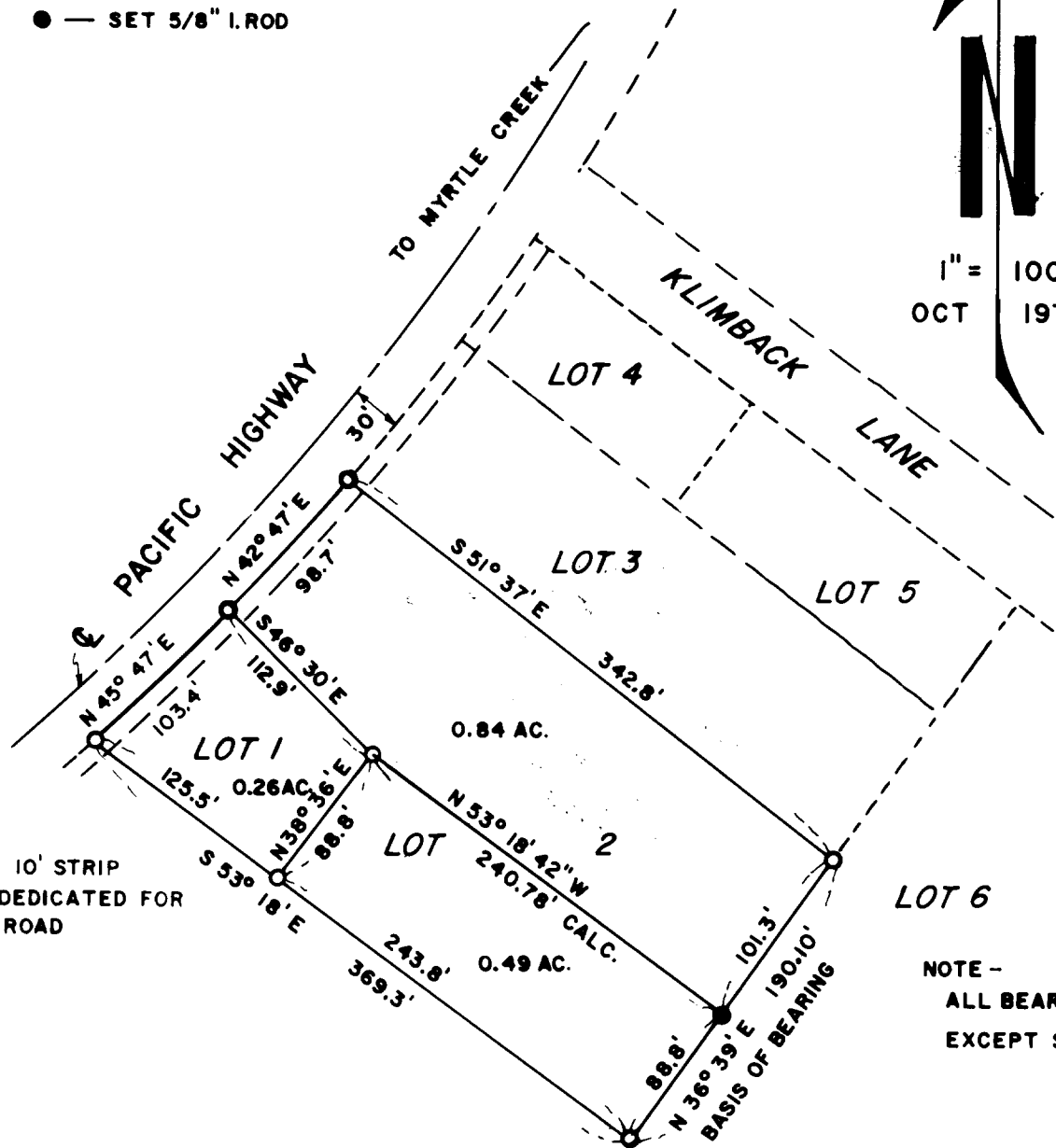
COUNTY SURVEYOR
DOUGLAS COUNTY, ORE.
mk

○ — FD. 3/4" I. PIPE
● — SET 5/8" I. ROD



SURVEY TO SHOW CONVEYANCE OF 0.84 ACRE
PARCEL FROM J. ROACH TO C. MARLIN
LOCATED LOT 2 KLIMBACK SUBDIVISION
SEC. 33, T29S, R5W, W.M.

BY HAROLD BALL - CIVIL ENGINEER - ROSEBURG



1" = 100'
OCT 1973



NOTE -
ALL BEARINGS & DISTANCES ARE RECORD
EXCEPT SE LINE LOT 2 WAS MEASURED