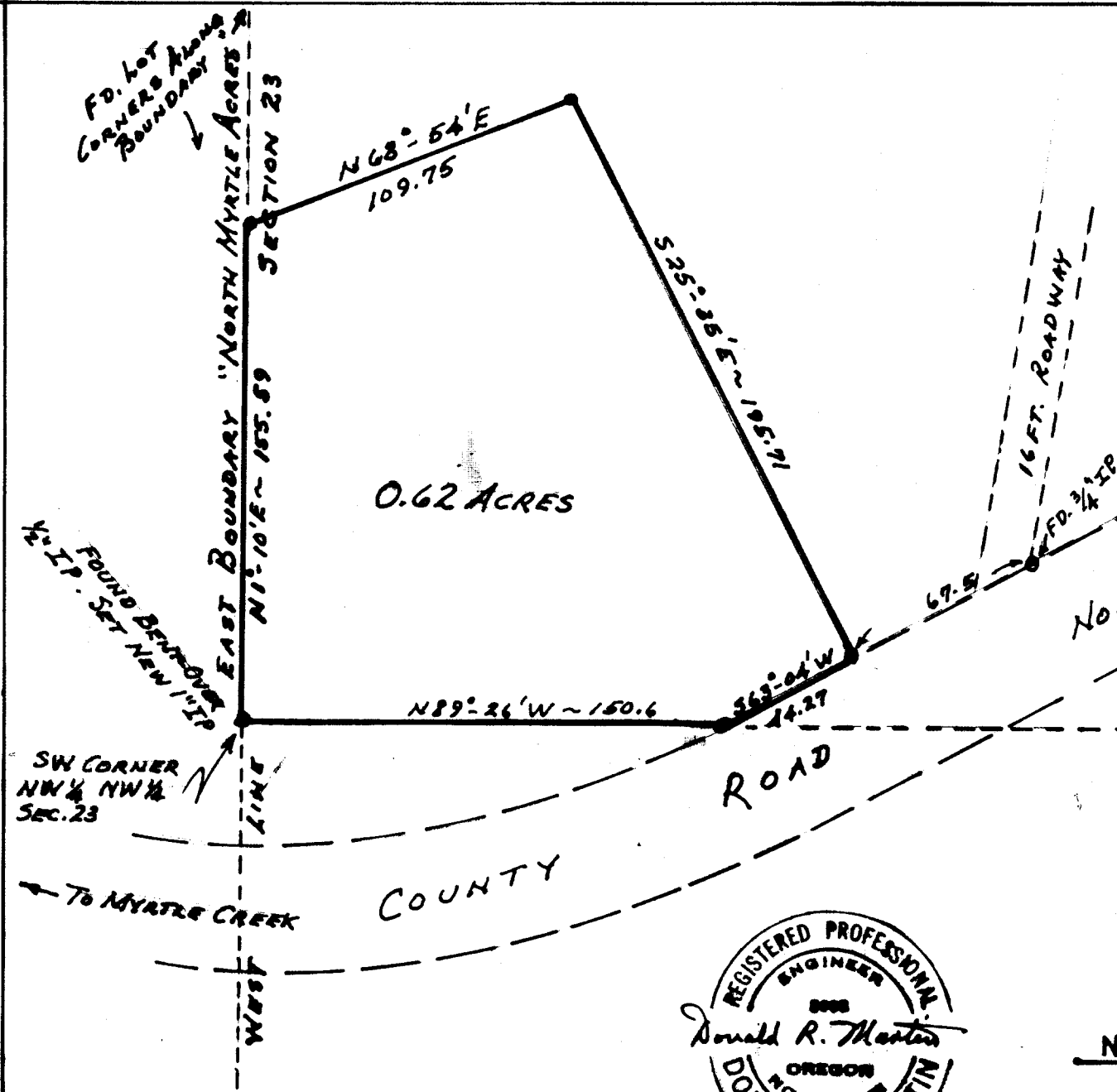


BASE OF BEARINGS: "NORTH MYRTLE ACRES" - N1°10'E

FILED  
RECEIVED

OCT 12 1973

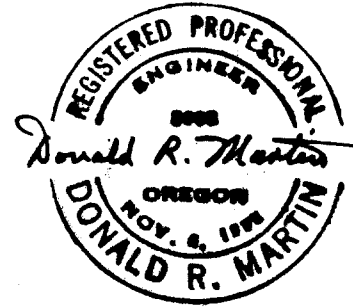
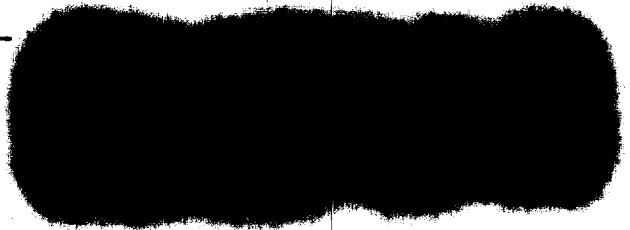
COUNTY SURVEYOR  
DOUGLAS COUNTY, ORE.  
M.L.



0.62 ACRES

ROAD

COUNTY



FIELD SURVEY & PLAT FOR  
HARMON C. WALKER  
MYRTLE CREEK, OREGON

NW 1/4 NW 1/4 SECTION 23 TWP. 29S RGE. 5W  
W.M. DOUGLAS COUNTY, ORE.

SCALE: 1" = 50'

MARTIN ENGINEERING SERVICE - MYRTLE CREEK

JANUARY 1968

C.S. FILE NO. 55/317-7