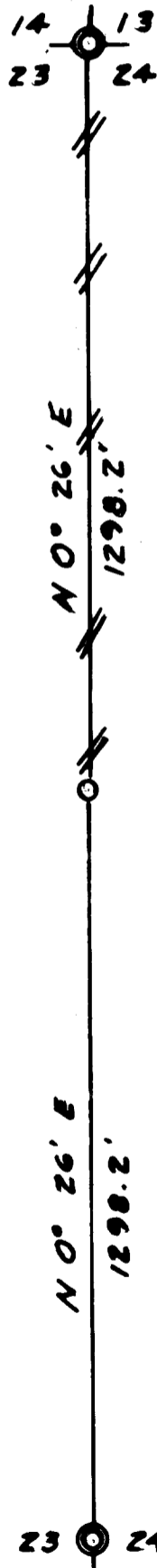


COUNTY SURVEYORS FILE DATA
DO NOT REMOVE FROM OFFICE

SURVEY
OF
N 1/2 WEST LINE
SECTION 24, T26S, R3W, W.M.
DOUGLAS COUNTY, OREGON
FOR
WEYERHAEUSER COMPANY

FILED
RECEIVED





FOUND :

DOUGLAS CO. SURVEYOR'S
PIPE WITH BRASS CAP
18" FIR, N 87 W, 31.0' CS BT
12" NEM, N 10 E, 10.0' CS BT
10" FIR, N 24 W, 34.6' CS BT
28" CEDAR, S 40 E, 39.1' CS BT

28" CEDAR, S 36 E, 37.5' W. CO. TAG
32" FIR, N 65 E, 40.4' W. CO. TAG
14" FIR, N 84 W, 31.6' W. CO. TAG
24" FIR, S 22 W, 57.5' W. CO. TAG

LEGEND :

CORNERS FOUND 
CORNER SET 

LINE MARKED WITH
NOTCH IN RED PAINTED
BLAZE 

BEARING FROM SOLAR
OBSERVATION

BY TRIANGLE
ENGINEERING CO.

SCALE : 1" = 300'

SEPT 1973



SET :

2 1/2" IRON PIPE WITH BRASS
CAP
16" MAPLE, S 42 W, 41.4' TO
"W" NAIL
22" FIR, N 76 E, 44.4' TO
RR SPIKE

FOUND :

DOUGLAS CO. SURVEYOR'S
PIPE WITH BRASS CAP
36" I. CEDAR, S 85 E, 75.4' OLD BT
42" FIR STUMP, N 83 W, 37.7' W. CO. TAG
16" I. CEDAR, N 77 E, 45.1' NEW BT
5" FIR, S 47 W, 13.9' NEW BT