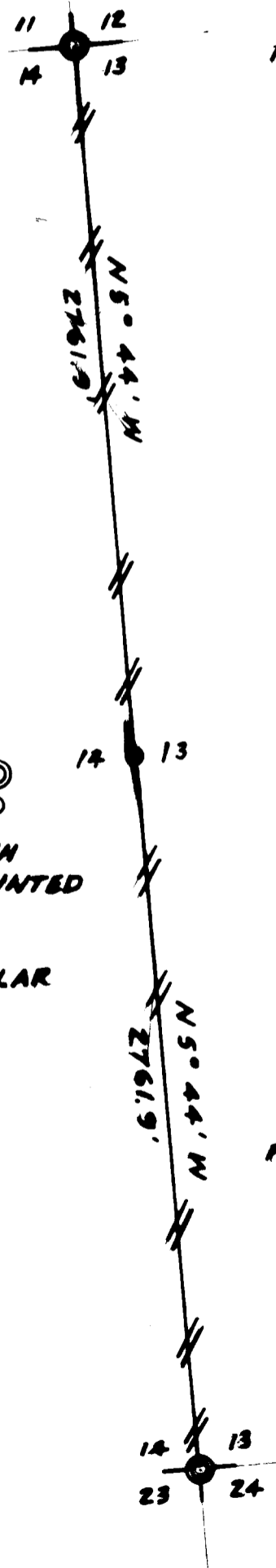


COUNTY SURVEYORS FILE DATA  
DO NOT REMOVE FROM OFFICE



**SURVEY**  
OF  
**EAST LINE**  
**SECTION 14, T26S, R3W, W.M.**  
**DOUGLAS COUNTY, OREGON**  
FOR  
**WEYERHAEUSER COMPANY**


*2/2*



**FOUND : WITNESS CORNER 70' WEST OF SECTION CORNER - DOUGLAS CO. SURVEYOR'S PIPE WITH BRASS CAP**  
23" CEDAR, N 5 E, 35.4' WC BT  
14" HEM, N 69 W, 49.5' WC BT  
39" CEDAR, S 51 W, 37.0' WC BT  
38" CEDAR, S 75 E, 150' WC BT

**LEGEND :**

**CORNERS FOUND**   
**CORNER SET** 

**LINE MARKED WITH NOTCH IN RED PAINTED BLAZE** 

**BEARING FROM SOLAR OBSERVATION**

**SCALE : 1" = 600'**  
**SEPT 1973**

**BY TRIANGLE ENGINEERING CO.**

**SET : 2 1/2" IRON PIPE WITH BRASS CAP**  
22" HEM, N 69 W, 23.9 TO RR SPIKE  
38" HEM, S 13 E, 46.1' TO RR SPIKE

**FOUND : DOUGLAS CO. SURVEYOR'S PIPE WITH BRASS CAP**  
18" FIR, N 87 W, 31.0' CS BT  
12" HEM, N 10 E, 10.0' CS BT  
10" FIR, N 24 W, 34.6' CS BT  
28" CEDAR, S 40 E, 39.1' CS BT

28" CEDAR, S 36 E, 37.5' W. CO. TAG  
32" FIR, N 65 E, 40.4' W. CO. TAG  
16" FIR, N 84 W, 31.6' N. CO. TAG  
24" FIR, S 22 W, 57.5' W. CO. TAG

