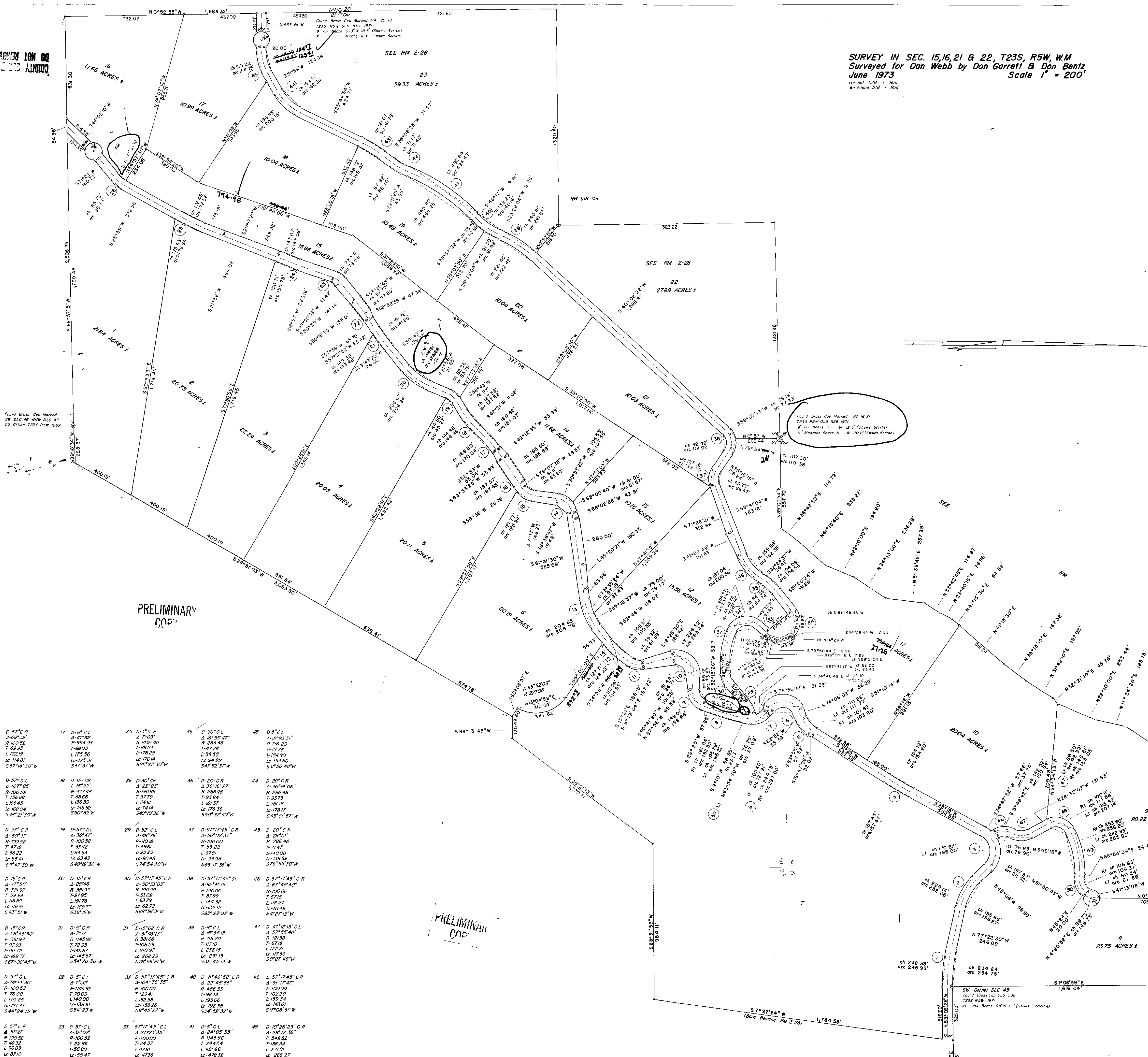


15-2-120
E16/55 S.7

COUNTY SURVEYORS FILE DATA
DO NOT REMOVE FROM OFFICE

SURVEY IN SEC. 15, 16, 21 & 22, T23S, R5W, W/M
Surveyed for Dan Webb by Don Garrett & Don Bentz
June 1973
Scale 1" = 200'



1 D 5°35'44" CR A 154°32'02" R 1023.95 T 121.50 L 241.86 L 241.30 N48°03'31"W	9 D 57° CR A 60°33' R 100.52 T 69.93 L 175.96 L 174.81 L 241.30 S57°18'30"W	17 D 6° CL A 10°32' R 1054.33 T 88.03 L 175.96 L 175.96 S57°27'30"W	25 D 4° CR A 7°03' R 1432.40 T 78.24 L 176.25 L 176.14 S47°52'31"W	35 D 20° CL A 18°25'41" R 286.40 T 47.76 L 154.90 L 154.60 S37°56'40"W	45 D 8° CL A 12°23'31" R 286.40 T 47.76 L 154.90 L 154.60 S37°56'40"W
2 D 15° CR A 30°16'30" R 38.97 T 110.52 L 215.16 L 212.32 N61°14'15"W	10 D 57° CL A 107°25' R 100.52 T 69.93 L 175.96 L 175.96 S57°18'30"W	18 D 10° CR A 16°22' R 477.46 T 68.06 L 156.39 L 156.39 S50°32'W	26 D 30° CR A 21°23' R 1150.99 T 149.18 L 174.81 L 174.81 S40°10'30"W	36 D 20° CR A 36°16'27" R 286.40 T 47.76 L 154.90 L 154.60 S37°56'40"W	44 D 20° CR A 21°23' R 286.40 T 47.76 L 154.90 L 154.60 S37°56'40"W
3 D 42° CL A 106°36' R 136.46 T 183.02 L 253.81 L 241.30 S28°51'30"W	11 D 57° CR A 50°17' R 100.52 T 69.93 L 175.96 L 175.96 S57°18'30"W	19 D 57° CL A 36°47' R 100.52 T 69.93 L 175.96 L 175.96 S57°18'30"W	29 D 52° CL A 36°47' R 100.52 T 69.93 L 175.96 L 175.96 S57°18'30"W	37 D 57°17'45" CR A 56°02'37" R 100.00 T 79.93 L 175.96 L 175.96 S57°18'30"W	45 D 20° CR A 28°01' R 286.40 T 47.76 L 154.90 L 154.60 S37°56'40"W
4 D 2° CR A 3°03' R 1964.79 T 77.94 L 155.23 L 155.81 S28°51'30"W	12 D 15° CR A 17°50' R 38.97 T 110.52 L 215.16 L 212.32 S47°30'30"W	20 D 15° CR A 17°50' R 38.97 T 110.52 L 215.16 L 212.32 S47°30'30"W	30 D 57°17'45" CR A 57°17'45" R 100.00 T 79.93 L 175.96 L 175.96 S57°18'30"W	38 D 57°17'45" CL A 57°17'45" R 100.00 T 79.93 L 175.96 L 175.96 S57°18'30"W	46 D 57°17'45" CR A 67°48'40" R 100.00 T 79.93 L 175.96 L 175.96 S57°18'30"W
5 D 27° CR A 32°27' R 38.97 T 110.52 L 215.16 L 212.32 S47°30'30"W	13 D 15° CR A 17°50' R 38.97 T 110.52 L 215.16 L 212.32 S47°30'30"W	21 D 7° CR A 7°03' R 1145.92 T 79.93 L 175.96 L 175.96 S54°20'30"W	31 D 15° CR A 17°50' R 38.97 T 110.52 L 215.16 L 212.32 S47°30'30"W	39 D 8° CL A 8°42'11" R 76.20 T 107.10 L 232.15 L 231.13 S32°45'13"W	47 D 47°12'13" CL A 57°55'40" R 181.38 T 67.67 L 122.71 L 117.50 S57°08'51"W
6 D 57° CL A 15°06' R 100.52 T 69.93 L 175.96 L 175.96 S37°19'W	14 D 57° CL A 15°06' R 100.52 T 69.93 L 175.96 L 175.96 S37°19'W	22 D 5° CL A 7°00' R 145.92 T 79.93 L 175.96 L 175.96 S54°29'W	32 D 57°17'45" CR A 104°36'35" R 100.00 T 79.93 L 175.96 L 175.96 S57°18'30"W	40 D 10°46'52" CR A 22°48'56" R 100.00 T 79.93 L 175.96 L 175.96 S57°18'30"W	48 D 57°17'45" CR A 57°17'45" R 100.00 T 79.93 L 175.96 L 175.96 S57°18'30"W
7 D 57° CR A 56°04' R 100.52 T 69.93 L 175.96 L 175.96 S54°02'E	15 D 57° CR A 57°02' R 100.52 T 69.93 L 175.96 L 175.96 S54°02'E	23 D 57° CL A 3°02' R 100.52 T 69.93 L 175.96 L 175.96 S54°02'E	33 D 57°17'45" CL A 2°23'35" R 100.00 T 79.93 L 175.96 L 175.96 S57°18'30"W	41 D 5° CL A 4°45'21" R 100.00 T 79.93 L 175.96 L 175.96 S57°18'30"W	49 D 10°26'23" CR A 28°17'36" R 100.00 T 79.93 L 175.96 L 175.96 S57°18'30"W
8 D 7° CR A 1°15' R 100.52 T 69.93 L 175.96 L 175.96 S54°02'E	16 D 5° CL A 1°15' R 100.52 T 69.93 L 175.96 L 175.96 S54°02'E	24 D 8° CR A 8°00' R 100.00 T 79.93 L 175.96 L 175.96 S54°02'E	34 D 57°17'45" CL A 144°04'52" R 100.00 T 79.93 L 175.96 L 175.96 S57°18'30"W	42 D 20° CR A 15°57' R 286.40 T 47.76 L 154.90 L 154.60 S37°56'40"W	50 D 57°19'32" CL A 15°57' R 107.58 T 45.32 L 108.76 L 81.53 N68°14'41"E

PRELIMINARY COE

COUNTY SURVEYORS FILE DATA
DO NOT REMOVE FROM OFFICE

PRELIMINARY
CORRECTIONS
CIRCLED IN RED

