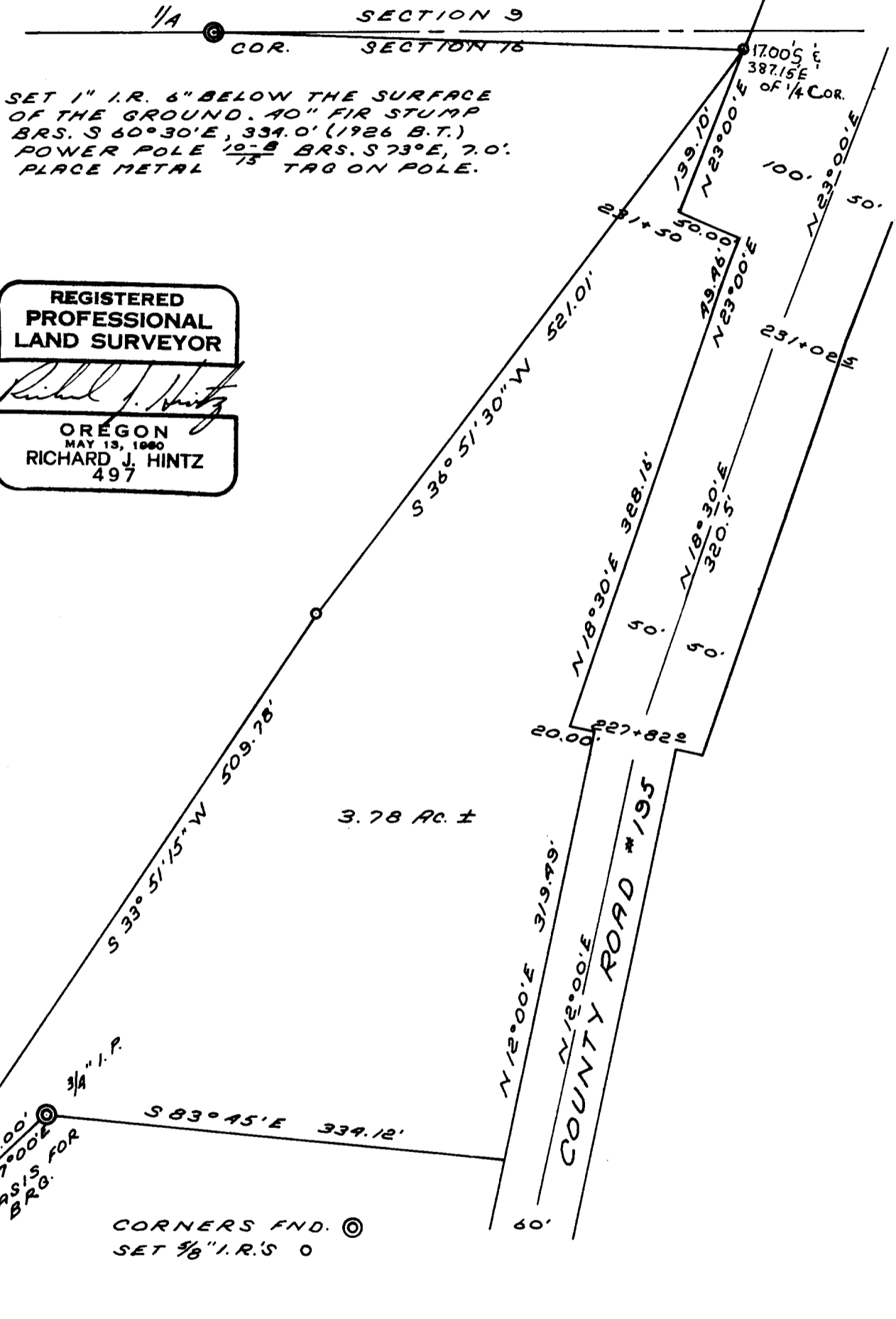


**COUNTY SURVEYORS FILE DATA  
DO NOT REMOVE FROM OFFICE**

FILED  
RECEIVED

AUG 28 1973

COUNTY SURVEYOR  
DOUGLAS COUNTY, ORE.



SET 1" I.R. 6" BELOW THE SURFACE  
OF THE GROUND. 40" FIR STUMP  
BRS. S 60° 30' E, 334.0' (1926 B.T.)  
POWER POLE 10" BRS. S 73° E, 7.0'.  
PLACE METAL TAG ON POLE.

**REGISTERED  
PROFESSIONAL  
LAND SURVEYOR**  
*Richard J. Hintz*  
**OREGON**  
MAY 13, 1960  
RICHARD J. HINTZ  
497

PROPERTY SURVEY  
FOR  
ROD BRANDON  
NW 1/4 NE 1/4, NE 1/4 NW 1/4; SEC. 16  
T 21 S, R 11 W, W.M.  
AUGUST 1973 - SCALE 1" = 100'

DOUGLAS COUNTY, OREGON

Memorandum for Richard J. Hintz

8/30, 1973

From Douglas County Surveyor's Office  
Rm. 122, Courthouse, Roseburg, Or. 97470

Dear Mr. Hintz:

We are unable to plot the Rod Brandon Survey in the N.W. 1/4 of Section 16, T. 21 S., R. 11 W., as shown in your title. Please check and let us know as we always end up in the N.E. 1/4. Also note the minor drafting error of R.11 E. We can correct this with authorization from you.

*Lorraine R. Lewis*

Lorraine R. Lewis  
Deputy Clerk

8/31/73

Dear Mrs. Lewis:

Guess I should have put my P.O.B. on the map, and shown the tie to the  $\frac{1}{4}$  corner. Other than the wrong range, you should be able to locate the survey according to the title block. You certainly have my authorization to make the change and/or addition. Thank you for

bringing this to my attention.

FILED  
RECEIVED

SEP 5 1973

COUNTY SURVEYOR  
DOUGLAS COUNTY, ORE.

COUNTY SURVEYORS FILE DATA  
DO NOT REMOVE FROM OFFICE

*Dick Hintz*  
Dick Hintz

CS 55/310-21

FILED  
RECEIVED

AUG 28 1973

COUNTY SURVEYOR  
DOUGLAS COUNTY, ORE.

SECTION 9  
COR. SECTION 16

SET 1" I.R. 6" BELOW THE SURFACE OF THE GROUND. 40" FIR STUMP  
BRS. S 60° 30' E, 334.0' (1926 B.T.)  
POWER POLE 10" BRS. S 73° E, 7.0'.  
PLACE METAL TAG ON POLE.

REN. # 8A

REGISTERED  
PROFESSIONAL  
LAND SURVEYOR

*Richard J. Hintz*

OREGON  
MAY 13, 1980  
RICHARD J. HINTZ  
497

NE 1/4 NW 1/4

NW 1/4 NE 1/4

3.78 AC. ±

COUNTY ROAD #195

CORNERS FND. ©  
SET 3/8" I.R.'S 0

PROPERTY SURVEY  
FOR  
ROD BRANDON  
NW 1/4 NE 1/4, NE 1/4 NW 1/4; SEC. 16  
T 21 S, R 11 E, W. 1/4  
AUGUST 1973 - SCALE 1" = 100'