

SURVEY IN S.E.  $\frac{1}{4}$  SEC. 24,  
T27S, R6W, W.M., CITY OF  
ROSEBURG, ORE.

Surveyed for William E. Jones  
Surveyed by Victor M. McLind  
August, 1973

Scale: 1" = 50'

FILED *ll*  
RECEIVED *ed*

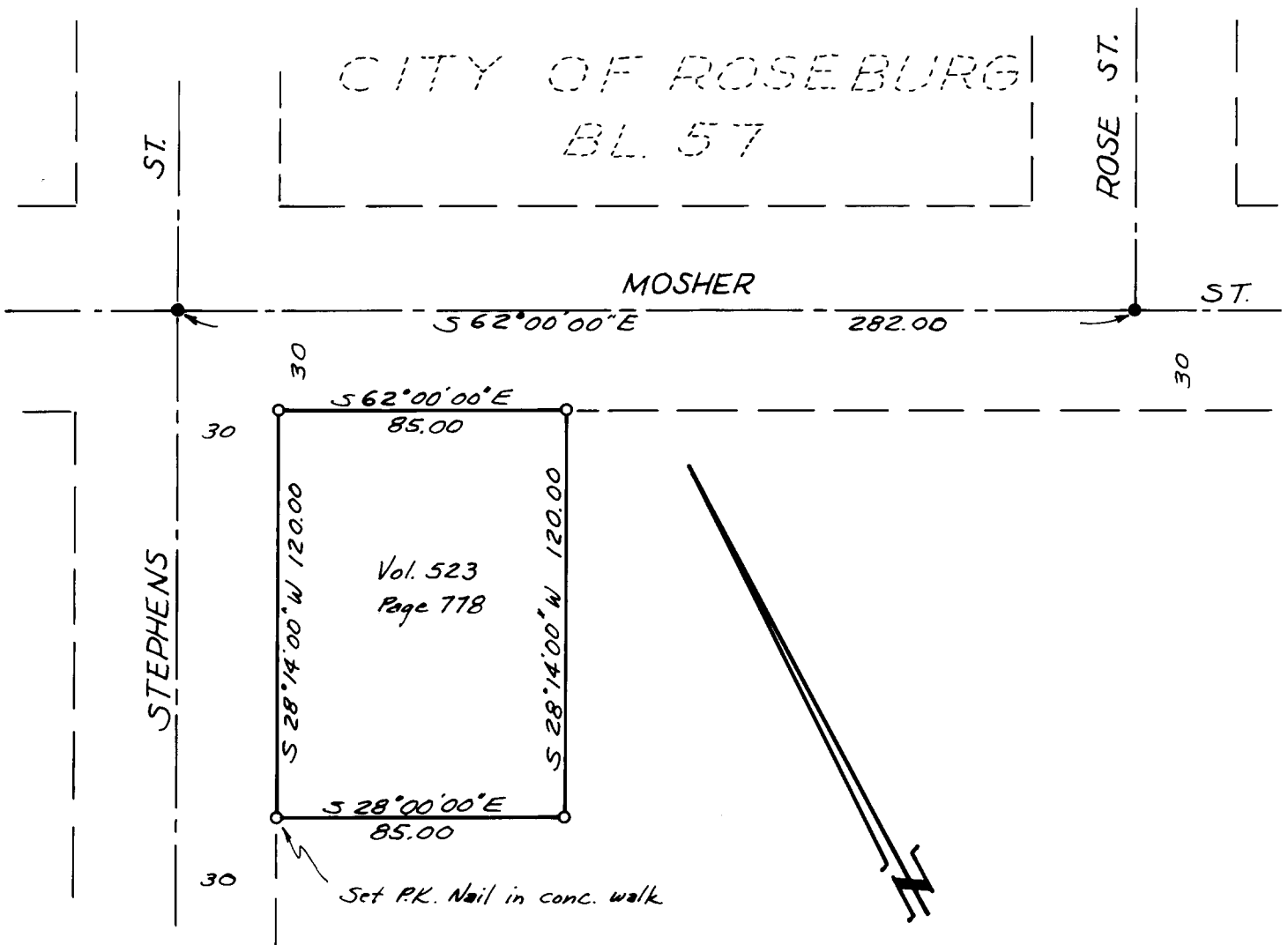
AUG 7 1973

COUNTY SURVEYOR  
DOUGLAS COUNTY, ORE.

*mf*

Bearings are based on  $\frac{1}{4}$  of Mosher St. (M17-39)

- ~ Indicates found Street Monument
- o ~ Indicates Set  $\frac{5}{8}$ " Iron Rod unless otherwise noted.



REGISTERED  
PROFESSIONAL  
LAND SURVEYOR

*Victor M. McLind*

OREGON  
JULY 17, 1970  
VICTOR M. McLIND  
934

COUNTY SURVEYORS FILE DATA  
DO NOT REMOVE FROM OFFICE