

T. 27-6 Sec. 13

SURVEY TO SET PROP. CORNERS
IN LOTS 15 & 16, BAUER'S ADD.
TO WEST ROSEBURG

JUL 27 1973

Surveyed for Harmon Walker and Bill Greute

COUNTY SURVEYOR
DAUGLAS COUNTY, ORE.

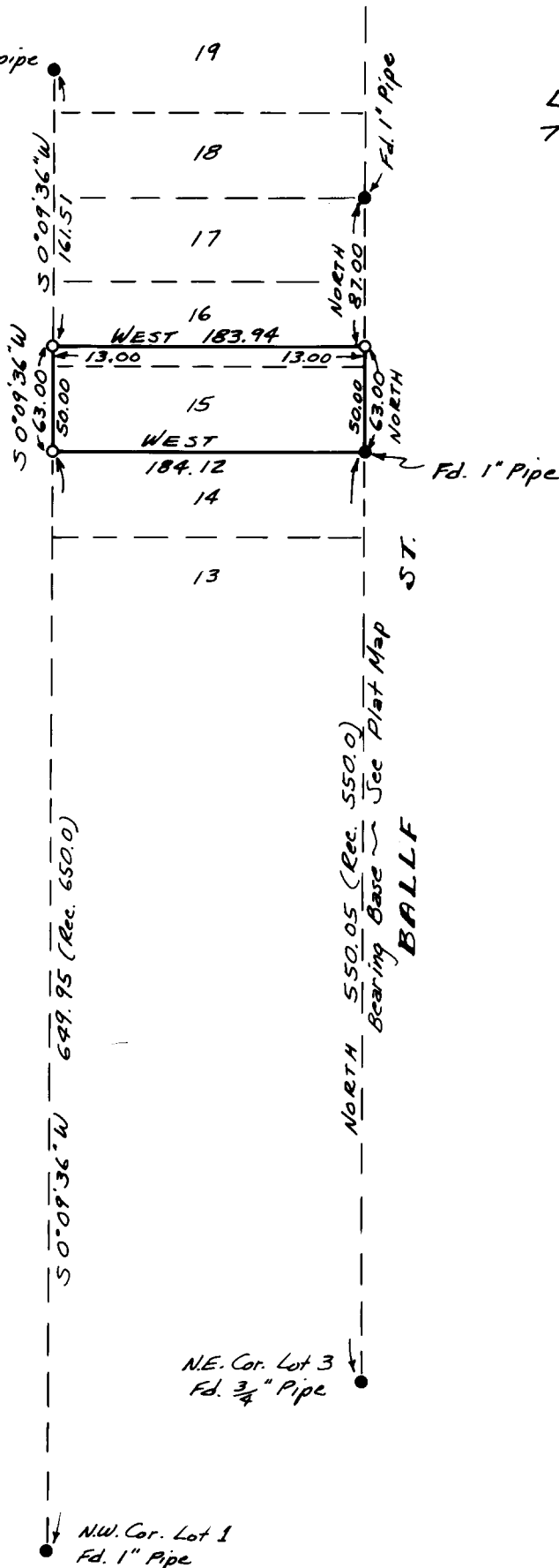
Surveyed by Victor M. McLind

July 1973

Scale: 1"=100'

DO NOT REMOVE FROM OFFICE

DO NOT REMOVE FROM OFFICE



LOCATED IN SEC. 13
T27S, R6W, W.M.



REGISTERED
PROFESSIONAL
LAND SURVEYOR

Victor M. McLind

OREGON
JULY 17 1973
VICTOR M. McLIND
934

o — Indicates Set 5/8" x 30" Iron Rod