

SURVEY FOR PROPERTY CORNERS IN SEC. 23, T. 27 S., R. 6 W., W.M.

FOR - K. E. RIEKE

BY - BAUGHMAN SURVEYING SERVICE

JULY 1973

REGISTERED
PROFESSIONAL
LAND SURVEYOR

OREGON
MAY 13, 1960
EUGENE A. BLOOM
492

DO NOT REMOVE FROM OFFICE

FILED
SCALE 1" = 30'

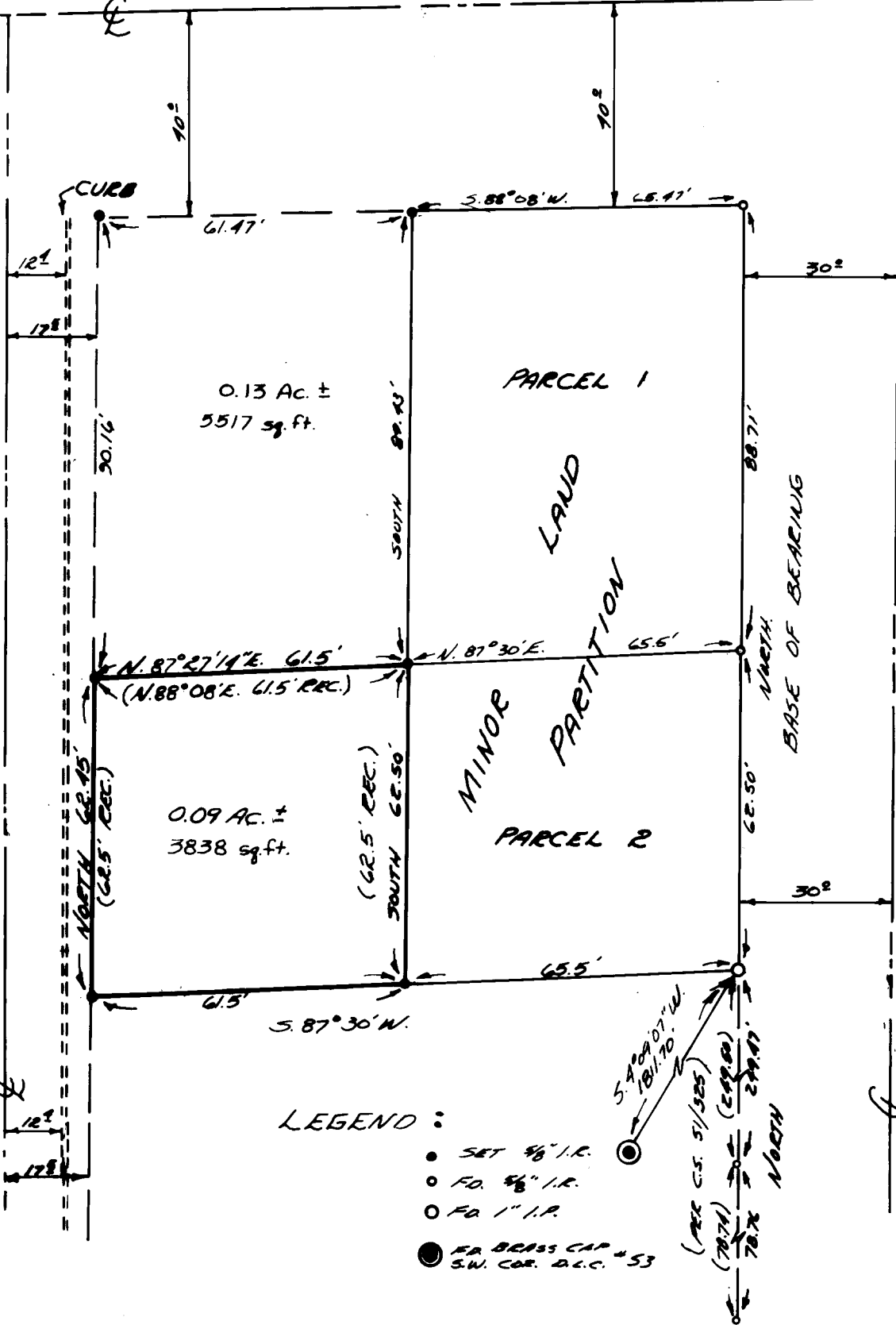
JUL 24 1973

COUNTY SURVEYOR
DOUGLAS COUNTY, ORE.

HARVARD AVENUE

BROCCOLI STREET

LUELLEN DRIVE



LEGEND :

- SET 3/8" I.R.
- FO. 3/8" I.R.
- FO. 1" I.R.
- BRASS CAP SW. COR. D.C.C. # 53

BASED ON C.S. 51/325