

SURVEY FOR PROPERTY CORNERS LOT 3 SUSIE-ANNA TRACTS IN SEC. 15, T. 28 S., R. 6 W., W.M. FOR JUDIE PALLADINO BY BAUGHMAN SURVEYING SERVICE

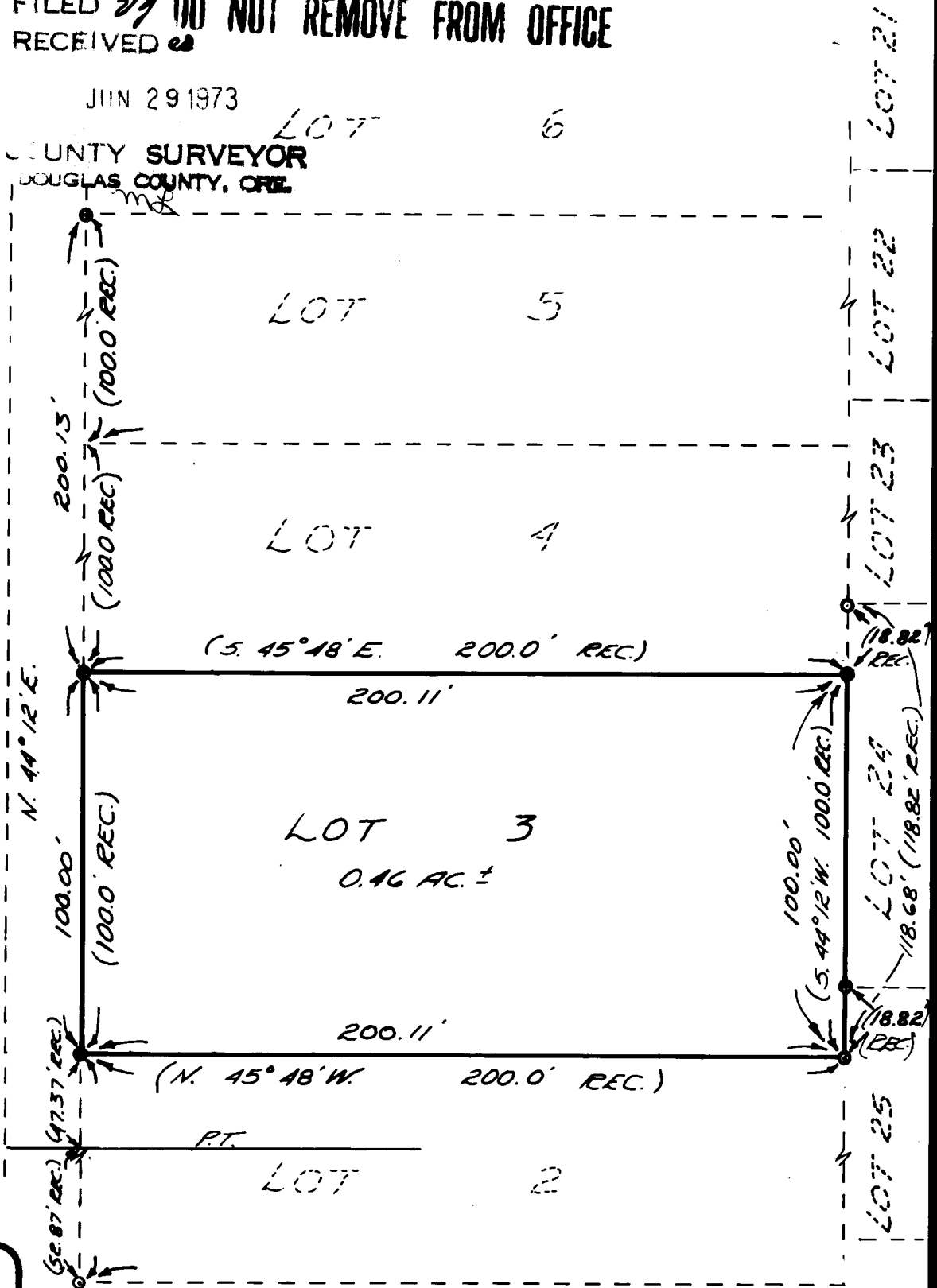
JUNE 1973

FILED *27* DO NOT REMOVE FROM OFFICE
RECEIVED *28*

JUN 29 1973

COUNTY SURVEYOR
DOUGLAS COUNTY, ORE.

PACIFIC HWY.



REGISTERED
PROFESSIONAL
LAND SURVEYOR

Eugene A. Bloom

OREGON
MAY 19, 1960
EUGENE A. BLOOM
492

LEGEND:

- FA 1/2" I.P.
- ⊙ FO 1/2" I.P.
- SET 5/8" I.P.

BASED ON "PLAT OF
SUSIE-ANNA TRACTS"