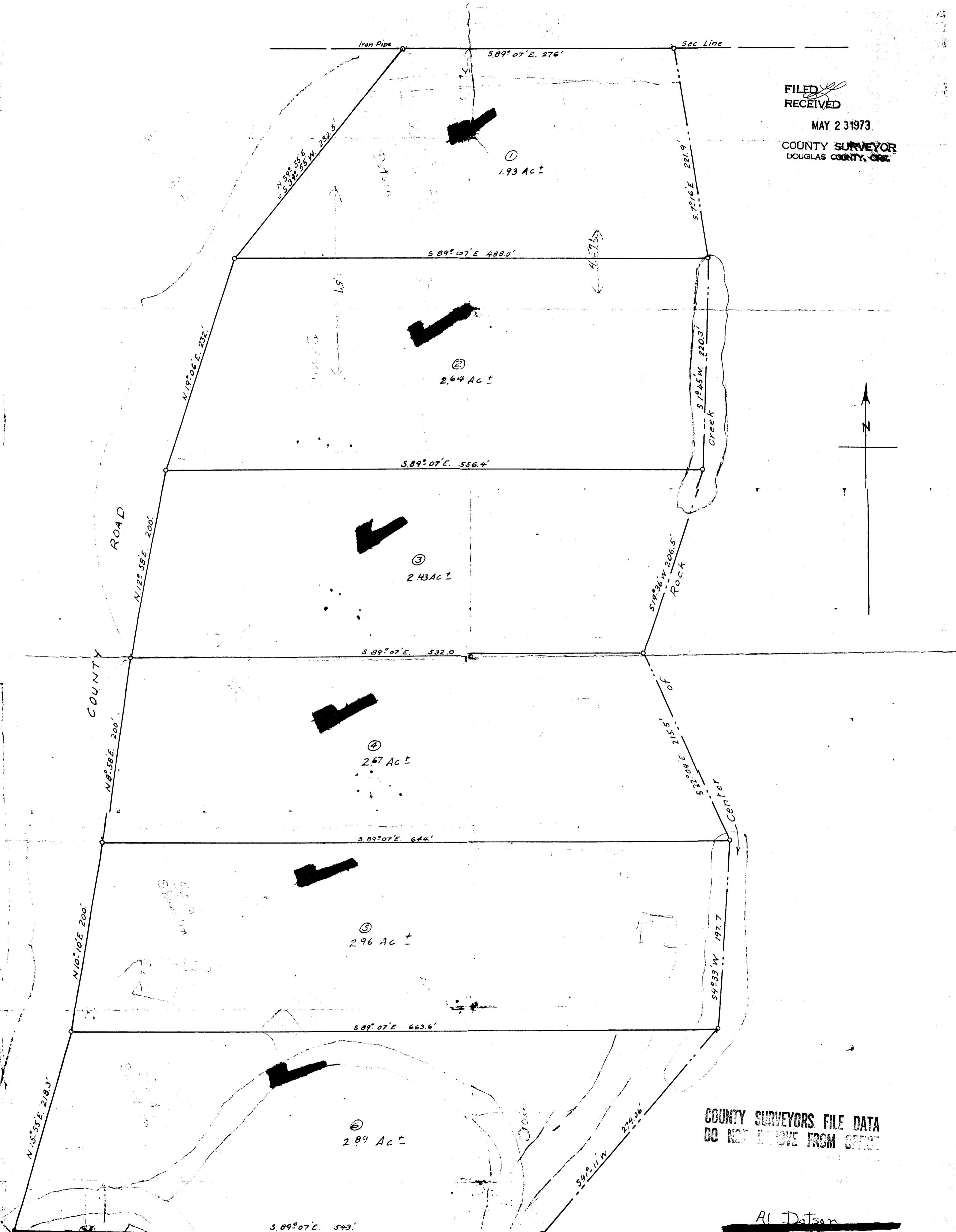


FILED  
RECEIVED

MAY 23 1973

COUNTY SURVEYOR  
DOUGLAS COUNTY, ORE.



COUNTY SURVEYORS FILE DATA  
DO NOT REMOVE FROM OFFICE

Al Datsen

PORTION OF LOT 1, SEC. 1, T. 26 S, R. 3 W, W. M. 1,  
ON ROCK CREEK

JUNE 1950 103.  
C. S. File No. 55/293