

COUNTY SURVEYORS FILE DATA
DO NOT REMOVE FROM OFFICE

SURVEY IN LOT 6 BLOCK 5 CAMPBELL'S SUBDIVISION
 Surveyed for The North Roseburg Evangelical Free Church
 Surveyed by Don E. Garrett
 June 1974
 o - Set 5/8" iron rod

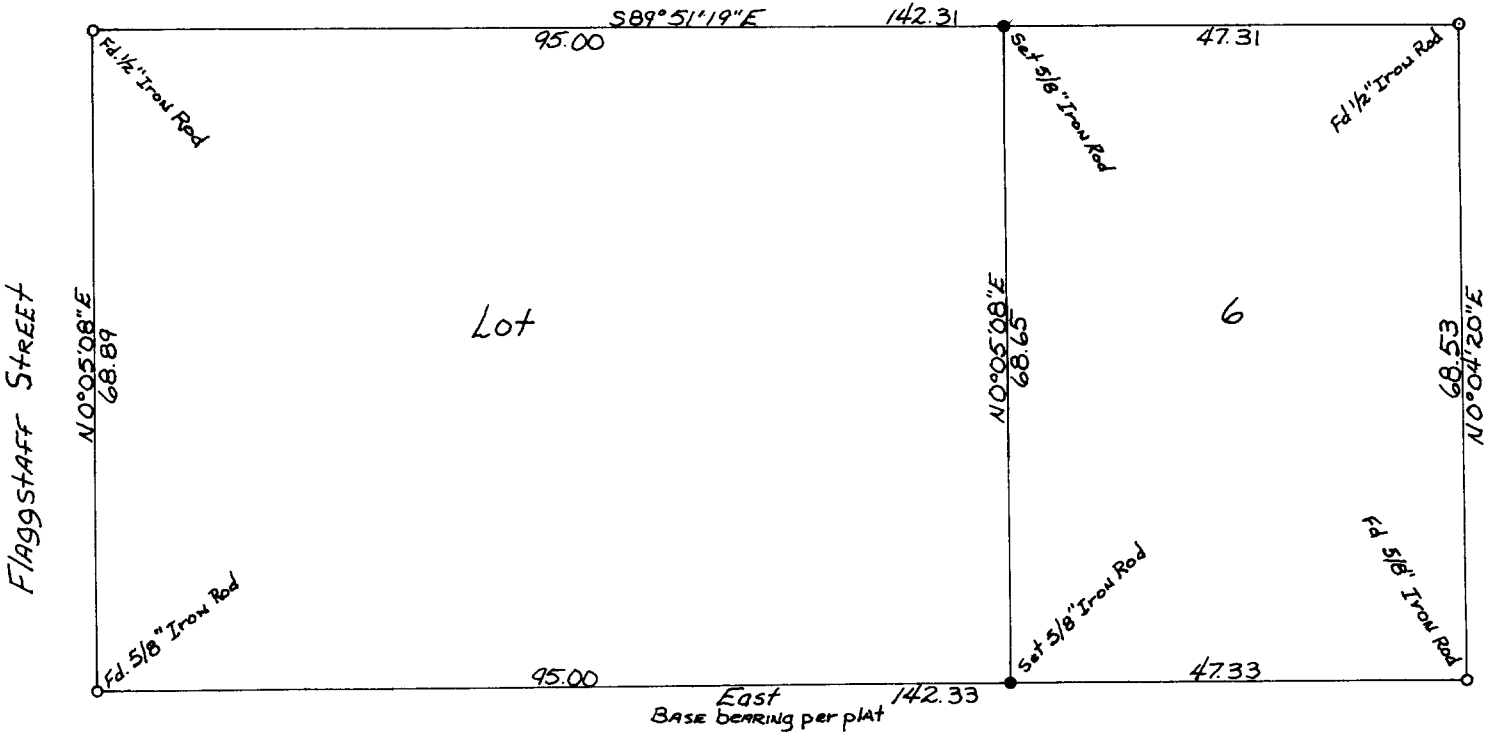
Scale 1" equals 20'

T. 27 S. R. 5 W SEC. 18

FILED ✓
 RECEIVED ✓

JUN 5 1974

COUNTY SURVEYOR
 DOUGLAS COUNTY, ORE.
mg

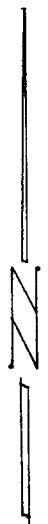


Flagstaff Street

Lot

6

East
 BASE bearing per plat



REGISTERED
 PROFESSIONAL
 LAND SURVEYOR

Don E. Garrett

OREGON
 JULY 14, 1961
 DON E. GARRETT
 544