

COUNTY SURVEYORS FILE DATA

DO NOT REMOVE FROM OFFICE

SURVEY IN SECTION 21, TOWNSHIP 30 SOUTH, RANGE 4 WEST, W.M.
 Surveyed for George M. Hayter by Don E. Garrett
 January, 1974
 © Set 5/8" I. Rod

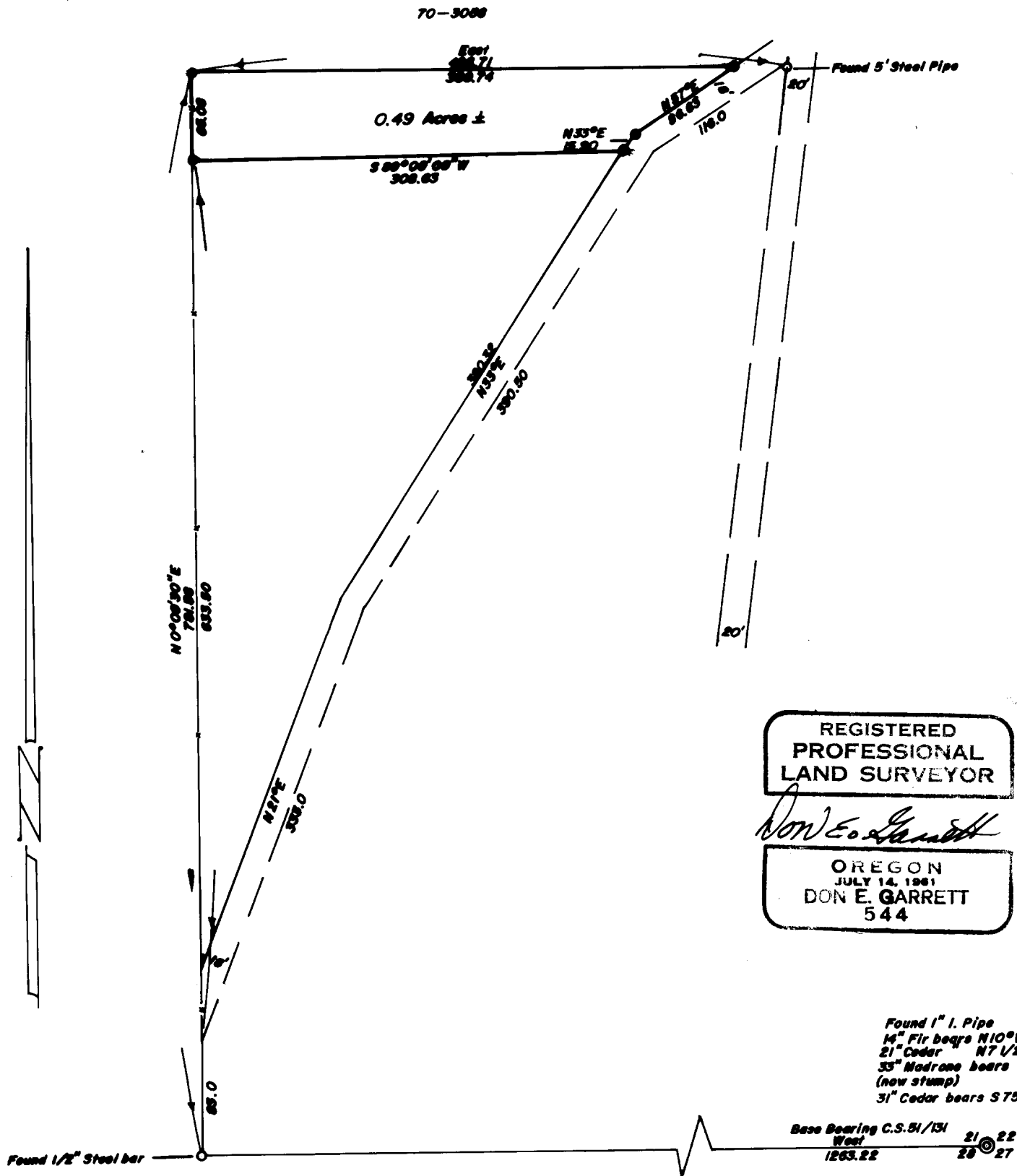
Scale 1" = 100'

FILED ✓
 RECEIVED 2/4

JAN 21 1974

COUNTY SURVEYOR
 DOUGLAS COUNTY, ORE.

mg



REGISTERED
 PROFESSIONAL
 LAND SURVEYOR

Don E. Garrett

OREGON
 JULY 14, 1961
 DON E. GARRETT
 544

Found 1" I. Pipe
 14" Fir bears N10°W 35.9'
 21" Cedar N7 1/2°E 22.0'
 33" Madrone bears S48°E 42.6'
 (now stump)
 31" Cedar bears S75°W 29.6'