

SURVEY IN SEC. 23, T. 27S., R. 3 W., W.M.

Surveyed for - George LaGrander

Surveyed by - Don E. Garrett

FILED *[Signature]*
RECEIVED *23*

MAY 9 1973

April 1973

Scale 1" = 100'

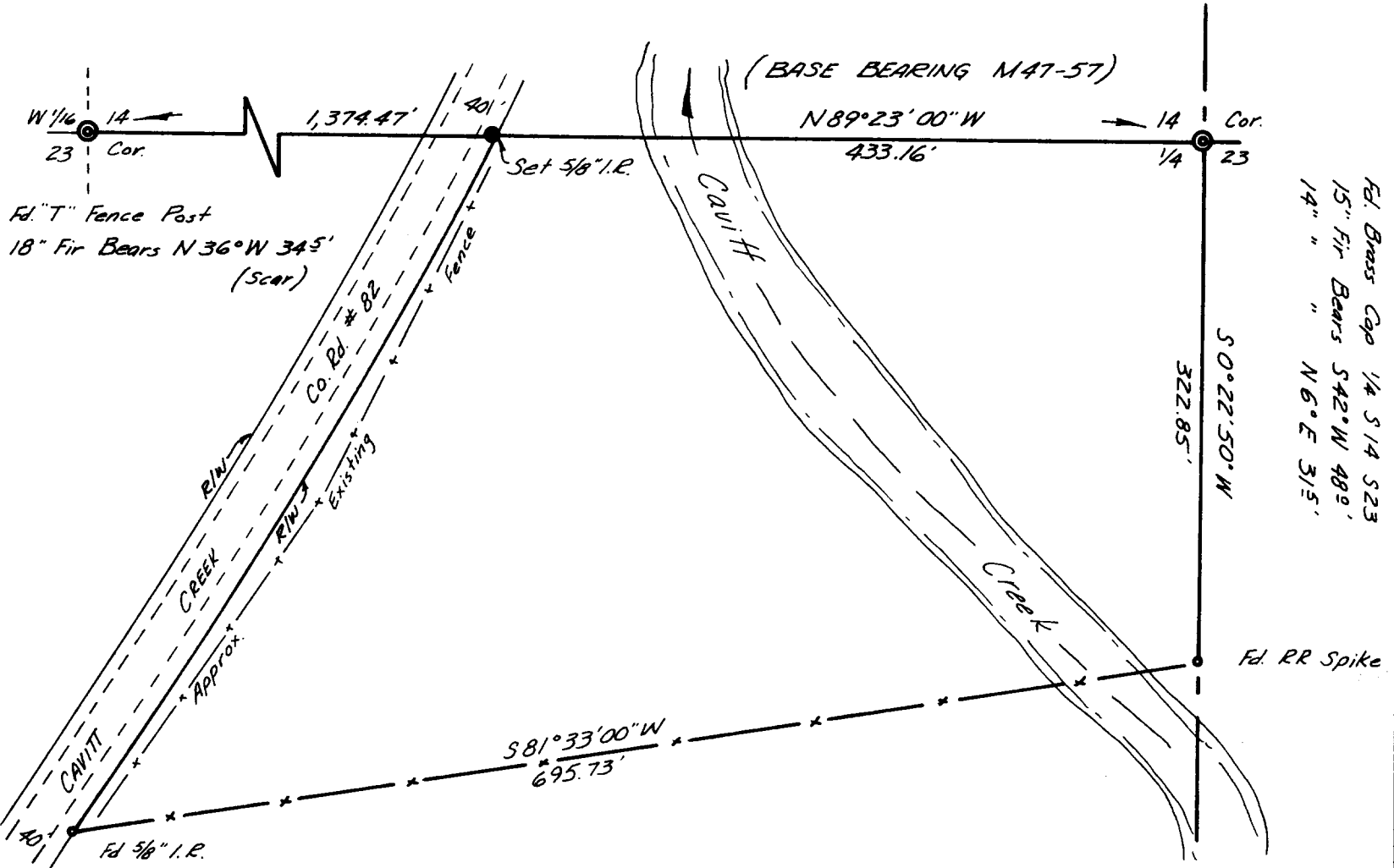
COUNTY SURVEYOR
DOUGLAS COUNTY, ORE.

**COUNTY SURVEYORS FILE DATA
DO NOT REMOVE FROM OFFICE**

REGISTERED
PROFESSIONAL
LAND SURVEYOR

Don E. Garrett

OREGON
JULY 14, 1961
DON E. GARRETT
544



Fd. Brass Cap 1/4 S 1/4 S 23
15" Fir Bears $S 42^{\circ} W 480'$
14" " " $N 6^{\circ} E 315'$