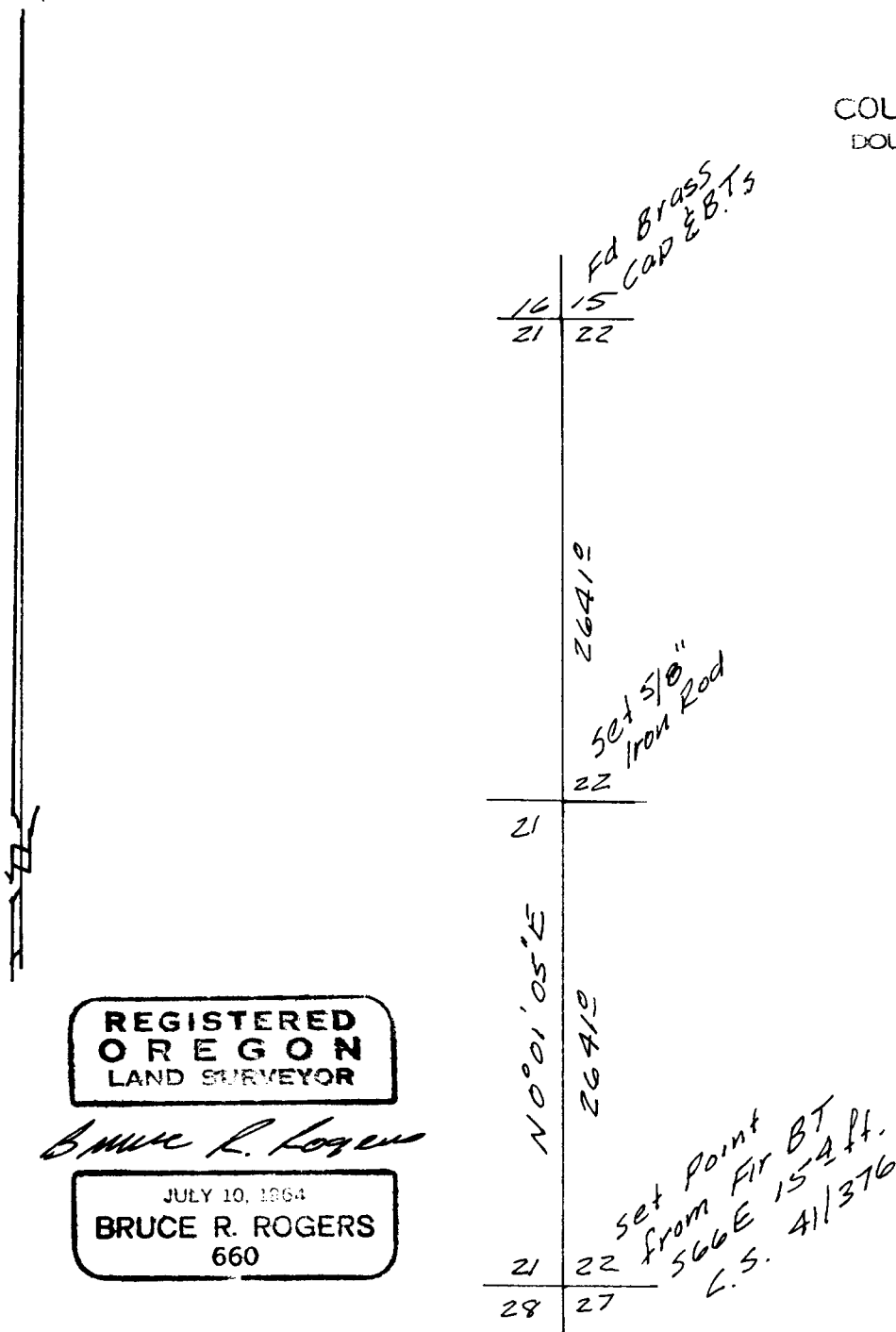


FILED
RECEIVED 2/3

MAY 7 1973

COUNTY SURVEYOR
DOUGLAS COUNTY, ORE.



REGISTERED
OREGON
LAND SURVEYOR

Bruce R. Rogers

JULY 10, 1964
BRUCE R. ROGERS
660

SECTION LINE SURVEY
WEST LINE SEC. 22, T. 25S., R. 5W.W.M.
FOR FRED HARRINGTON
by BRUCE ROGERS
AUGUST, 1972
1" = 1000'

COUNTY SURVEYOR
DO NOT REMOVE FROM OFFICE