

COUNTY SURVEYORS FILE DATA
DO NOT REMOVE FROM OFFICE

Survey In Section 7, T.22 S., R.12 W., W.M.

Surveyed for - CH₂M

Surveyed by - Don E. Garrett

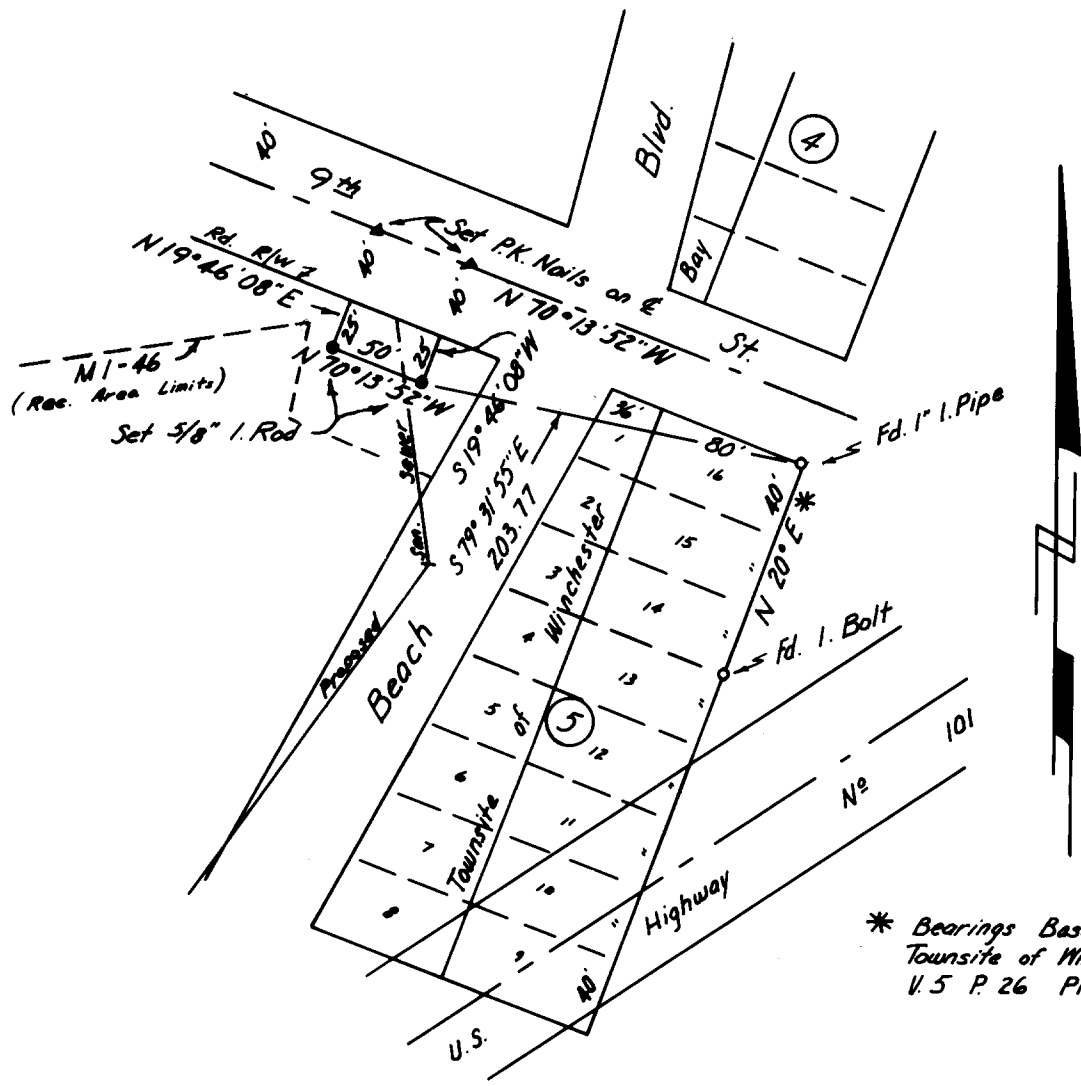
March 1973

Scale 1" = 100'

REGISTERED
PROFESSIONAL
LAND SURVEYOR

Don E. Garrett

OREGON
JULY 14, 1961
DON E. GARRETT
544



* Bearings Based on the
Townsite of Winchester Bay
U.S.P. 26 Plat Records