

# N.E. 1/4, SECTION 17, T.24S.R.3W.W.M.

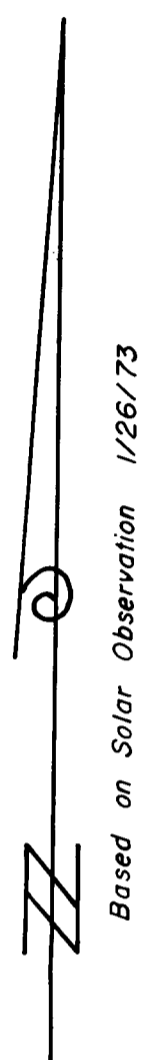
FOR: WEYERHAEUSER TIMBER CO.

BY: BAUGHMAN SURVEYING SERVICE

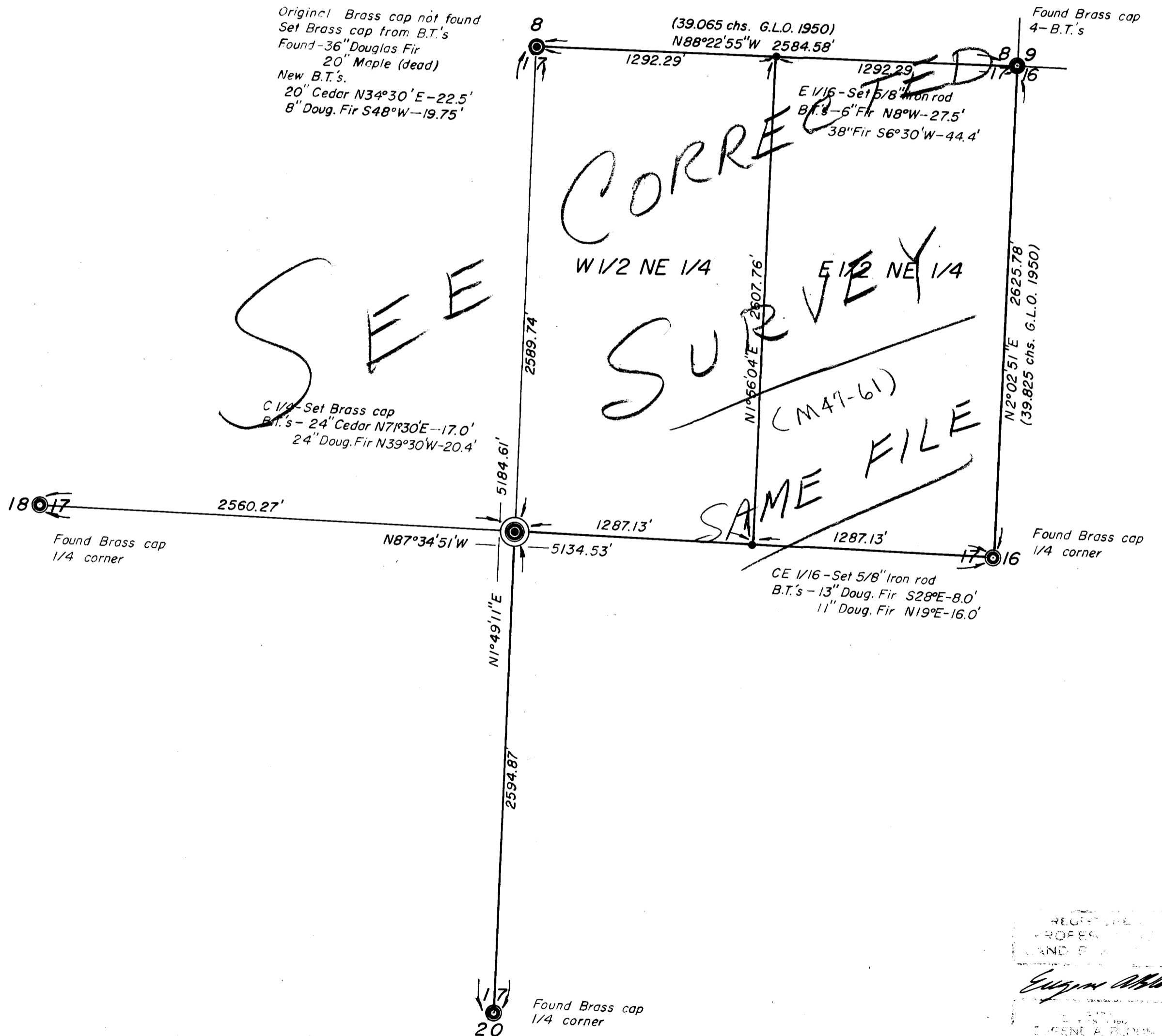
FEBRUARY 1973

FILED  
PROCESSED

COUNTY SURVEYOR  
SANDS COUNTY, ORE.



SCALE: 1" = 500'



REGISTERED  
PROFES  
LAND S  
*Eugene M...*  
EUGENE A. BAUGHMAN  
492

55 / 280