

SURVEY IN SECTION 2, T.29S., R.6W., W.M.

Surveyed for - Bill Shea

Surveyed by - Don E. Garrett

Feb. 1973

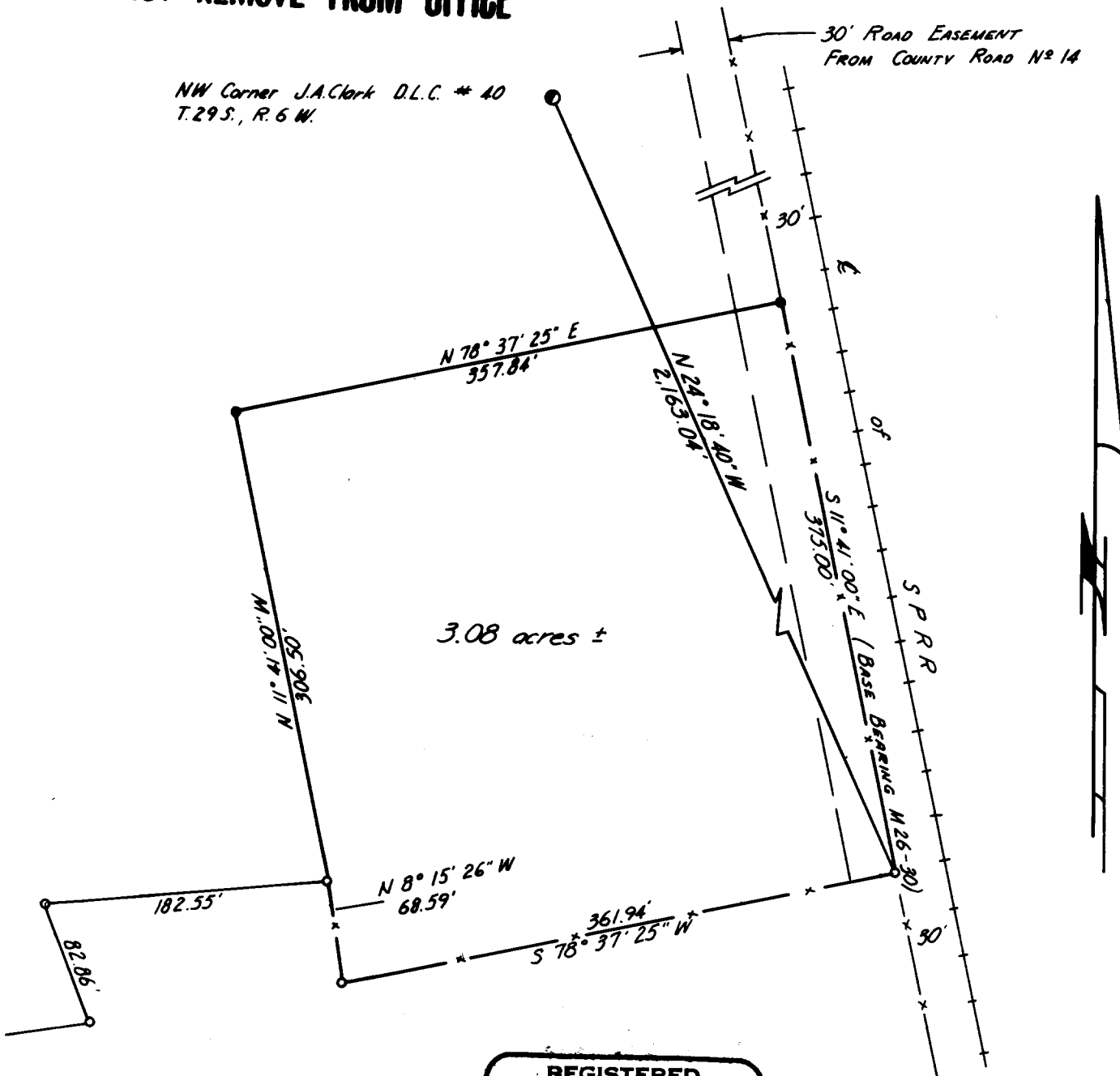
Scale 1" = 100'

• - 5/8" I.R. Set

○ - 5/8" I.R. Fd.

COUNTY SURVEYORS FILE DATA
DO NOT REMOVE FROM OFFICE

NW Corner J.A. Clark D.L.C. # 40
T.29S., R.6W.



REGISTERED
PROFESSIONAL
LAND SURVEYOR

Don E. Garrett

OREGON
JULY 14, 1967
DON E. GARRETT
544

FILED
RECEIVED
24

CLERK OF COUNTY