

COUNTY SURVEYORS FILE DATA

DO NOT REMOVE FROM OFFICE

# PROPERTY LOCATION SURVEY

TOWNSHIP 26 SOUTH RANGE 7 WEST W.M. SEC. 14

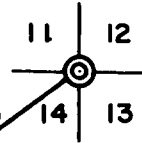
SURVEYED FOR I.D. KLINE  
0 = 5/8" IRON ROD SET

SURVEYED BY B. ROGERS  
SCALE 1" = 100'  
3-26-73

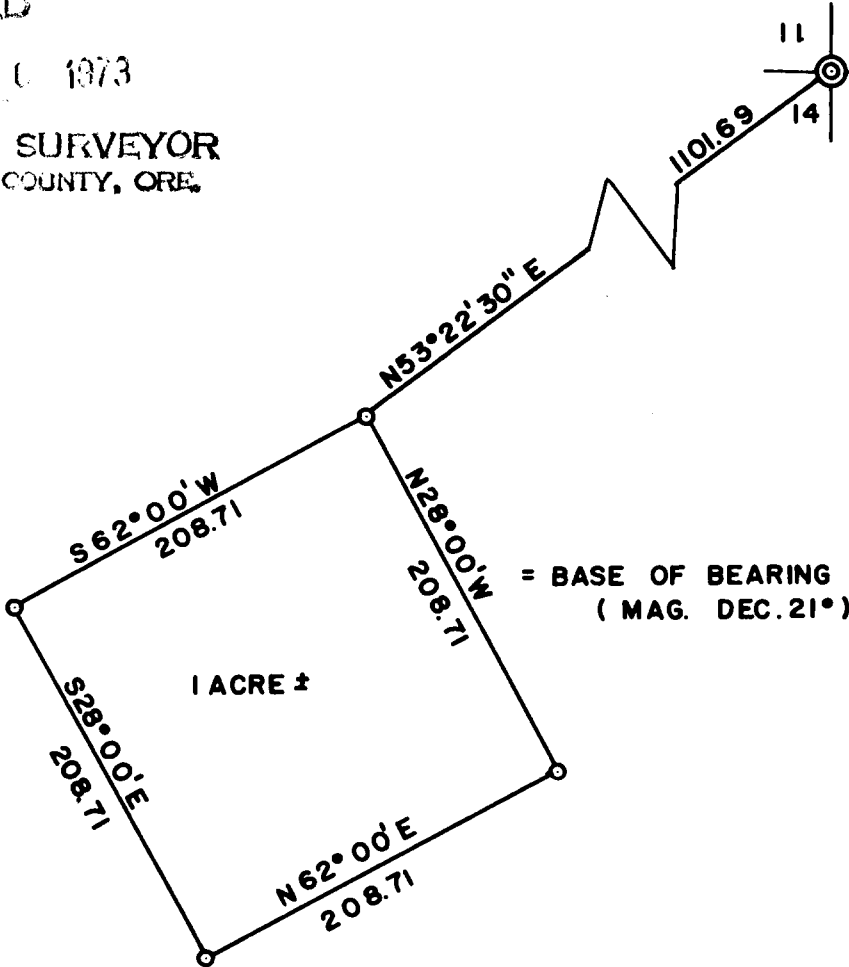
FILED  
RECEIVED

APR 6 1973

COUNTY SURVEYOR  
DEUCLAS COUNTY, ORE.



FD. COUNTY SURVEYORS  
BRASS CAP



*Bruce L. Rogers*